



TRADE MARK



No. 445

No. 444

No. 465

No. 462

No. 416

No. 463



No. 443

No. 442

No. 409

No. 447

No. 441

No. 440

"PLYMOUTH."

No. 440.	Goblet,	\$36.00 Doz.
" 441.	Saucer Champagne,	30.00 "
" 442.	Claret,	26.00 "
" 443.	Wine,	21.00 "

No. 444.	Sherry,	\$24.00 Doz.
" 445.	Cordial,	22.00 "
" 446.	Finger Bowl,	30.00 "
" 447.	Hollow Stem Champagne,	32.00 "

No. 409.	Cocktail,	\$26.00 Doz.
" 462.	Whiskey Tumbler,	18.00 "
" 463.	Lemonade,	20.00 "
" 465.	Half Pint Tumbler,	22.00 "



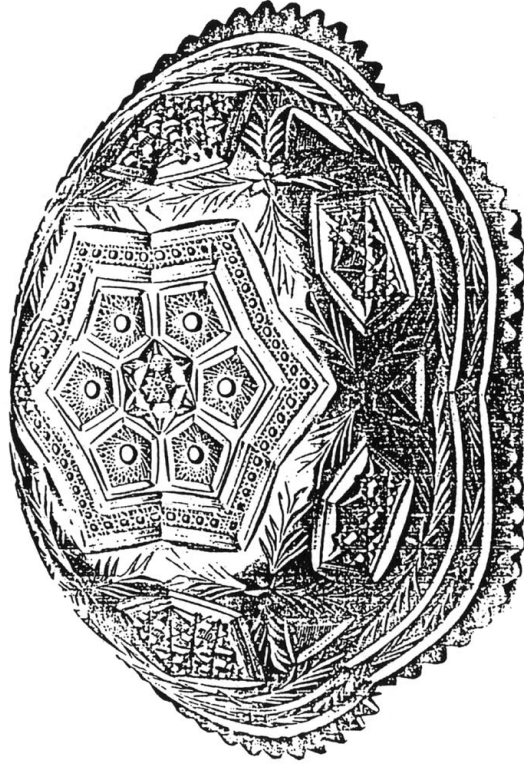
TRADE MARK



No. 1601 F. CUTTING "No. 304"

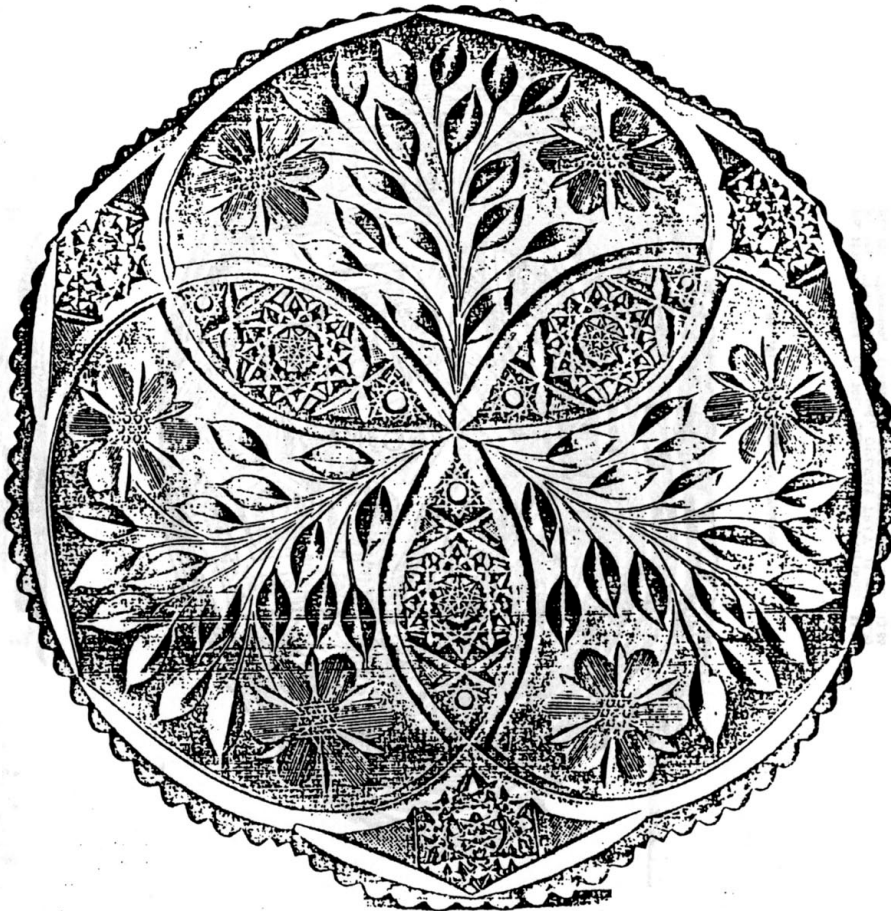
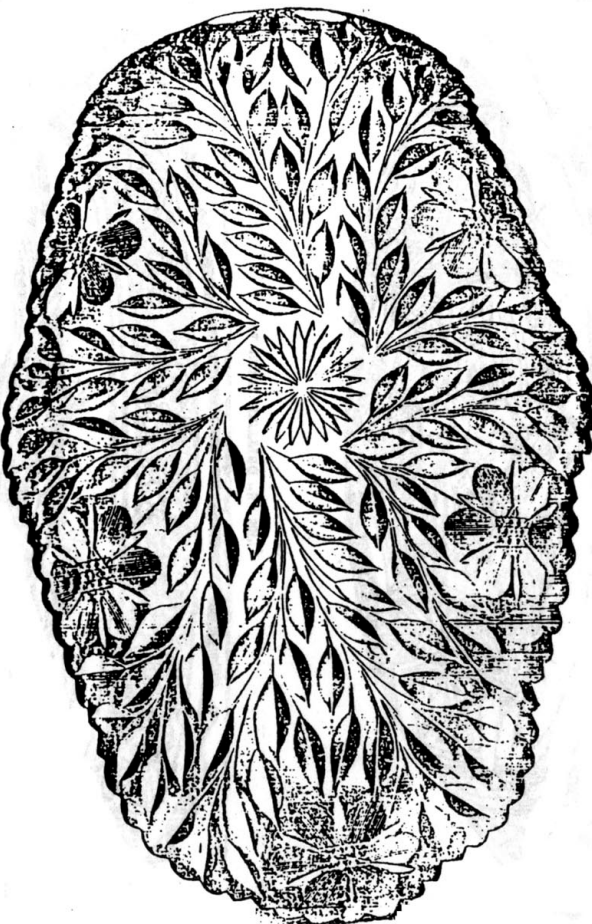


No. 802. "PATRICIAN," (Patented)



No. 191. "PATRICIAN," (Patented)

No. 1601 F. Cutting "No. 304," CELERY TRAY, 1 1/4 inch, \$5.00
 No. 802. "Patrician," (Patented), CELERY TRAY, 1 3/8 inch, 10.00
 No. 191. "Patrician," (Patented), FRUIT DISH, 1 1/8 inch, 13.88



ICE CREAM TRAYS.

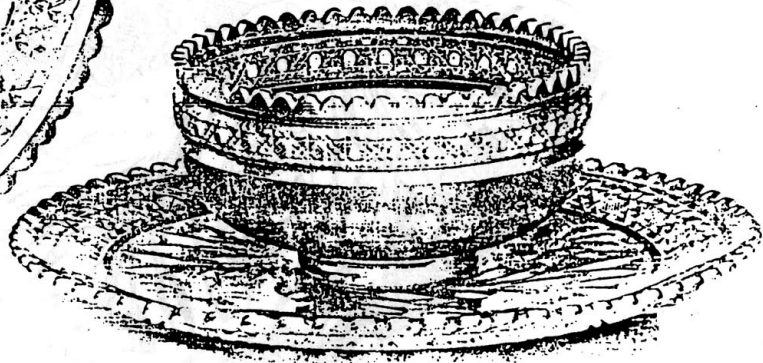
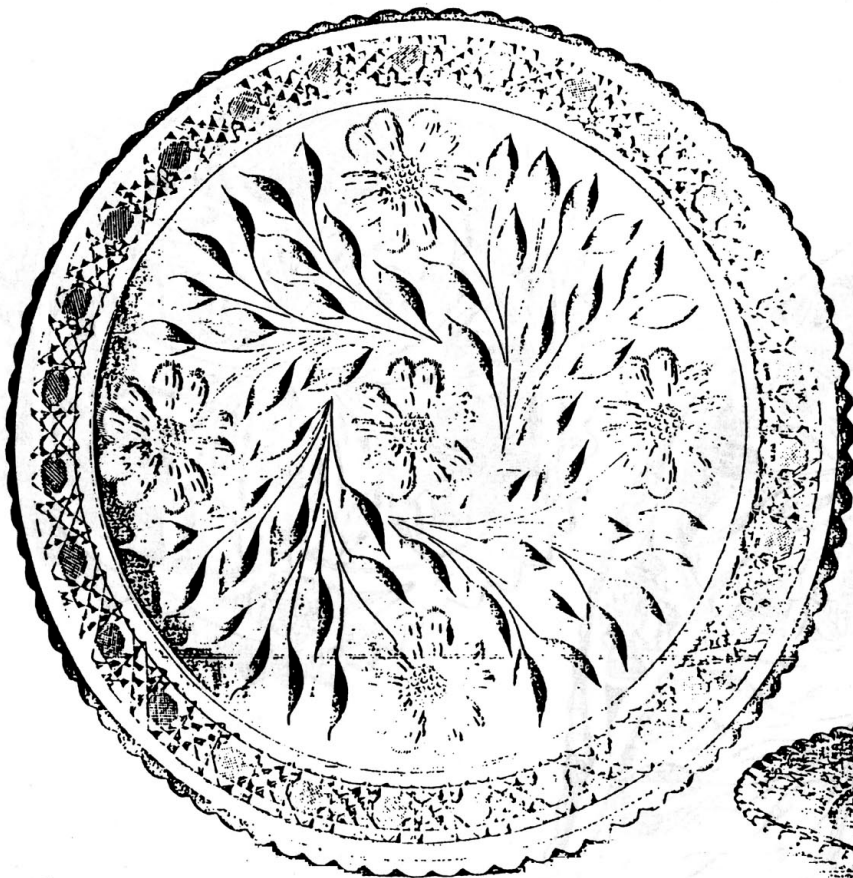
No. 1710. "Mayflower," 13 inch. \$13.00
DISCONTINUED

No. 718. "Shirley," (Patented), 13 inch, \$17.00

Five-eighths Size Plate 410 G.



TRADE MARK

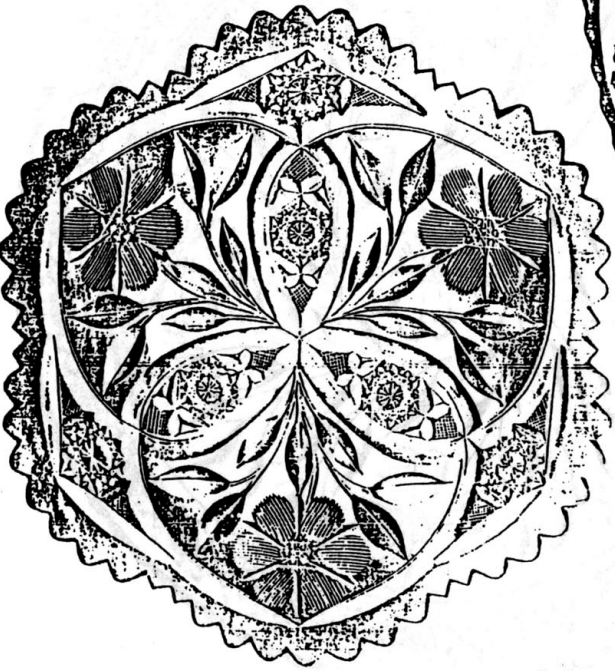
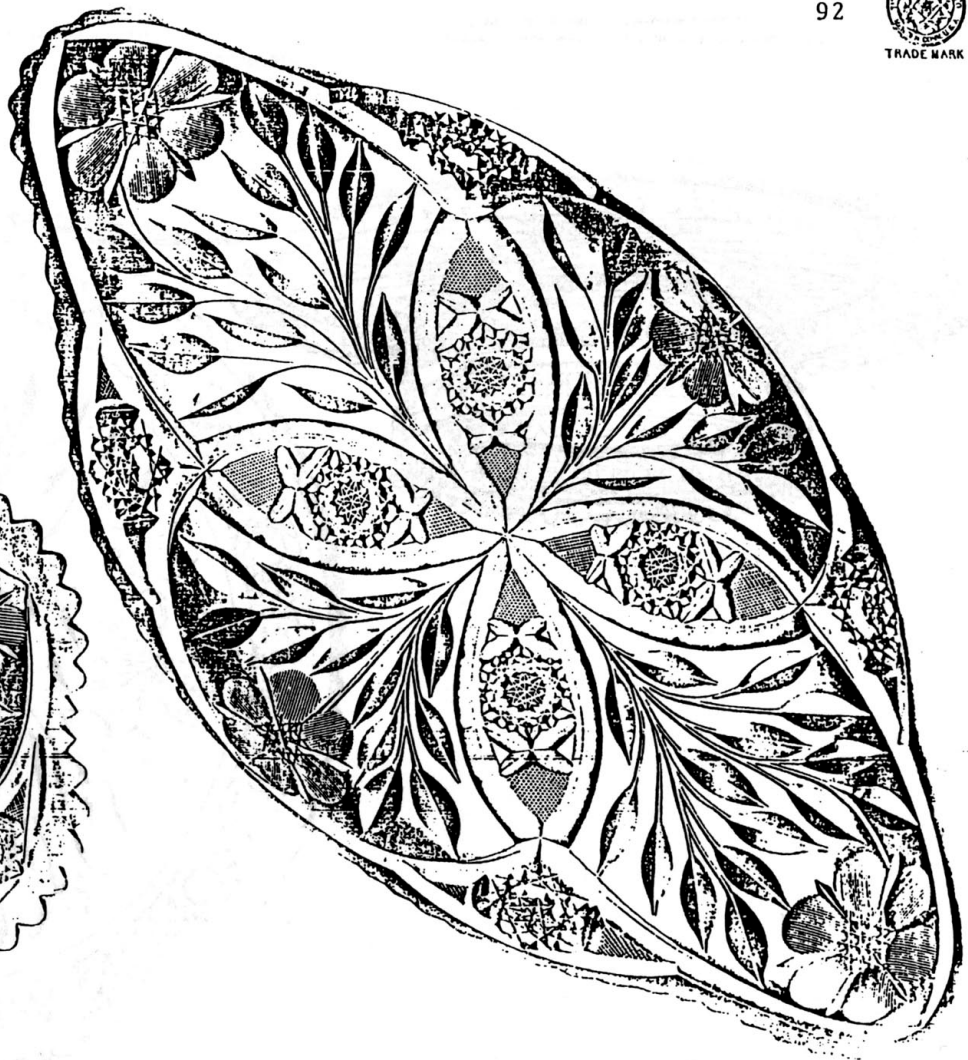


"SOROSIS."

No. 716. Round Ice Cream Tray, 13 inch, \$17.00 ~~18.00~~ // 34

No. 753. Cracker and Cheese Plate, 11 inch, \$16.00 ~~17.00~~
Plate is Cut like the Ice-Cream Tray.

Three fifths Size. Plate 378 G.

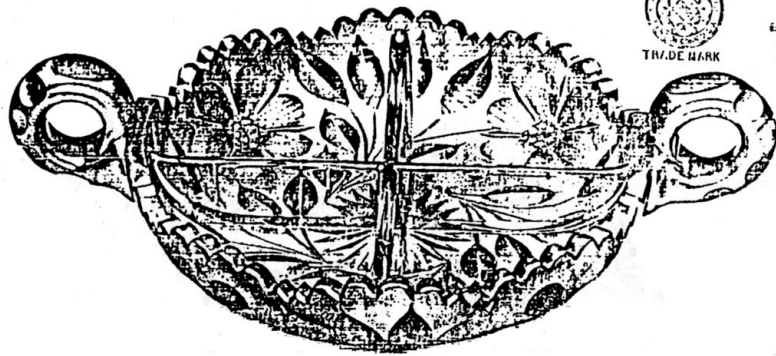


"SHIRLEY." (Patented.)

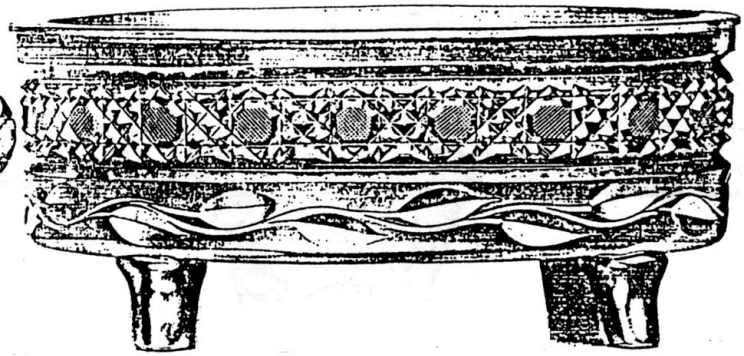
No. 760 F. Ice Cream Plate, 7 inch. \$3.00 ~~4.00~~ 2.50

No. 860 F. Ice Cream Tray, 14x7½ inches, \$8.50 ~~10.00~~ 4.34

Four-fifths Size. Plate 423 G.



No. 287



No. 986



DISCONTINUED

No. 189

"MAYFLOWER."

No. 287. Helish Dish, 7 inch, \$6.75
 No. 288. " " 8 " \$8.75
 Above have partitions making Four Compartments
 No. 189. Buckle Dish, 7 1/2 inch, \$7.00
 No. 188. " " 9 1/2 " 0 " \$22.00
 Fitted with Silver Plated Drain!

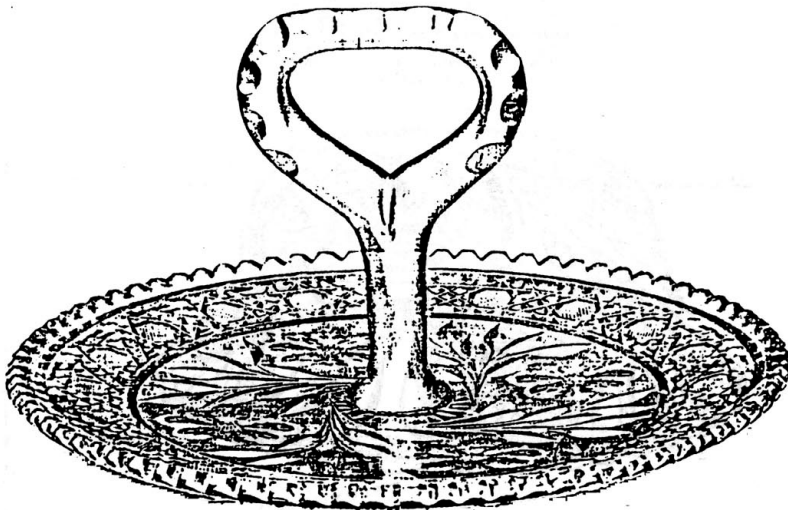


No. 201

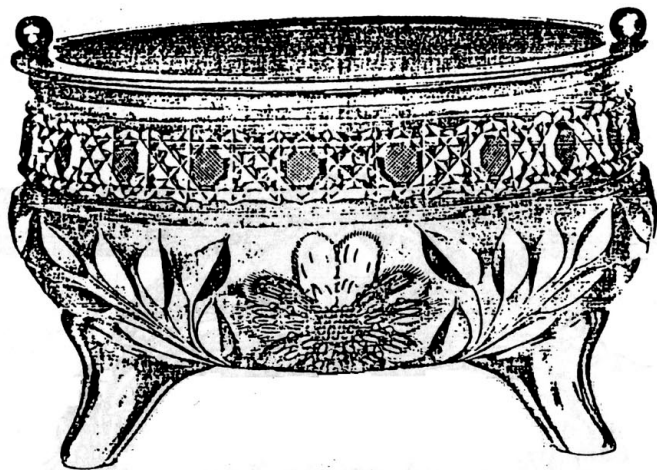
DISCONTINUED No. 986. Cutting "No. 283" Oval Fern Dish, 9 1/2 x 6 1/2 inches, \$12.00
 Fitted with Plated Lining

No. 200. "Mayflower" Round Nappy, 7 inch, 3.75
 No. 201. " " " 8 " 4.40
 No. 202. " " " 9 " 6.00

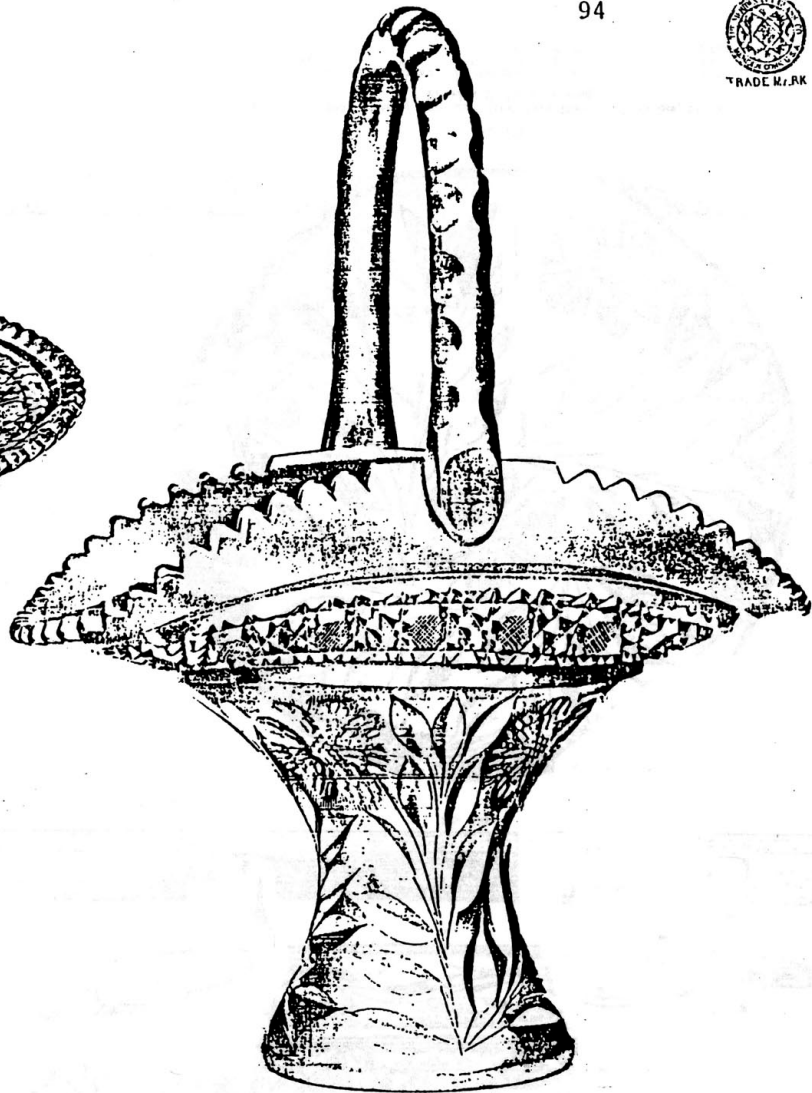
DISCONTINUED



No. 763



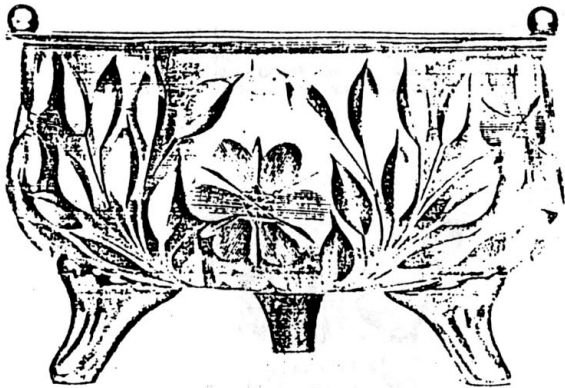
No. 1990



"SOROSIS";

No. 763. Handled Plate, 10 inch. \$11.00 ~~6.60~~ 7.34
 No. 1990. Fern Dish, 8 " 11.00 ~~6.00~~ 7.34.
 Fitted with Plated Lining.

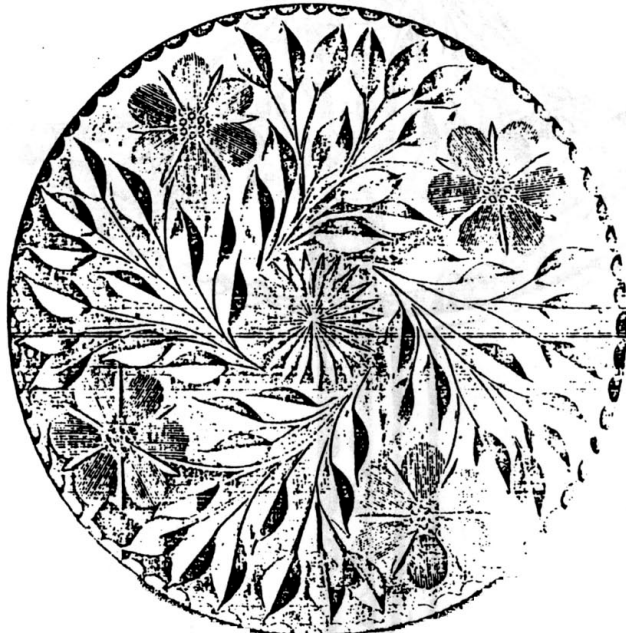
HANDLED FLOWER BASKET.
 No. 1006. 8 inch. \$12.00 ~~6.00~~ 6.67
 " 1007. 10 " 14.50 ~~7.00~~ 9.67
 " 1008. 12 " 20.00 ~~10.00~~ 13.34
 " 1088 1/2 A " 34.00 ~~17.00~~ 22.67



No. 1990



No. 187



No. 817



No. 251

"MAYFLOWER."

No. 1990.	Fern, 8 inch, with Plated Lining.	\$9.00	5.75	6.00
No. 817.	Sandwich Plate, 9 inch.	4.50	3.75	3.97
No. 818.	" " 10 "	5.50	4.75	5.07

"SHIRLEY." (Patented.)

No. 187.	Nut Bowl, 6 1/2 inch.	\$9.00	7.00	6.00
No. 188.	" " 8 "	12.00	7.00	8.00
No. 251.	Comport, 8 "	14.00	7.00	9.34