

956 no frame 68.00
~~40.50~~
4 5.34

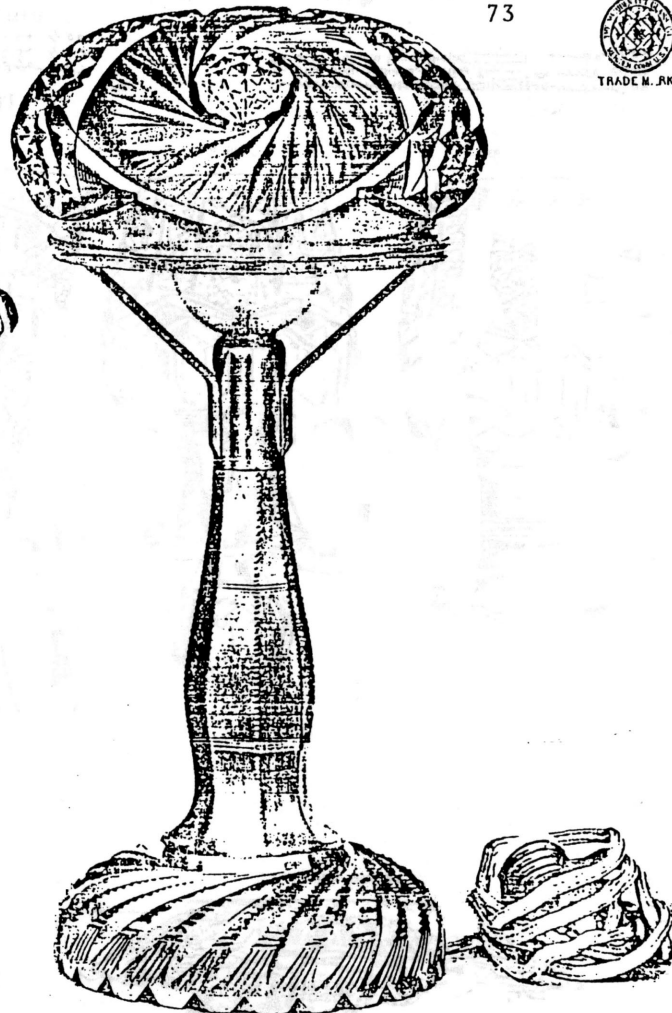
ELECTROLIER.

No. 956. Cutting "No 136." \$72.00 with pendant ~~40.50~~ 48.50
Height, 23 1/2 inches. Diameter of Shade, 12 inches.
Fitted with Two Lamps, 7 1/2 Feet Cord and Attachment Plug.



WINE COOLER

No. 921. Cutting "No. 213," Height, 10 Inches, \$30.00
With Silver Plated Lining

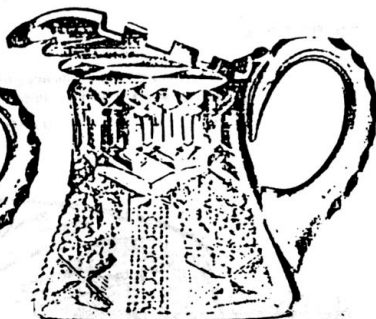


ELECTROLIER

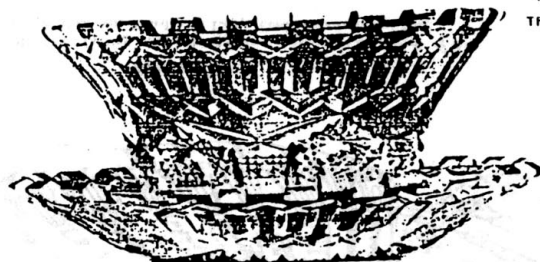
No. 963. Cutting "No. 143," 12 1/2 Inches High, \$14.00
Shade 6 1/2 Inches Diameter, Fitted with Lamp, Cord and Attachment Plug.



"No. 608."



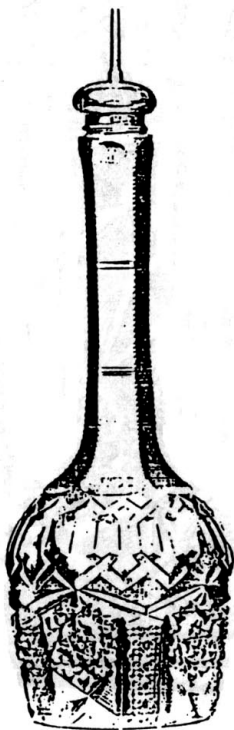
"No. 628."



"No. 808/E08."



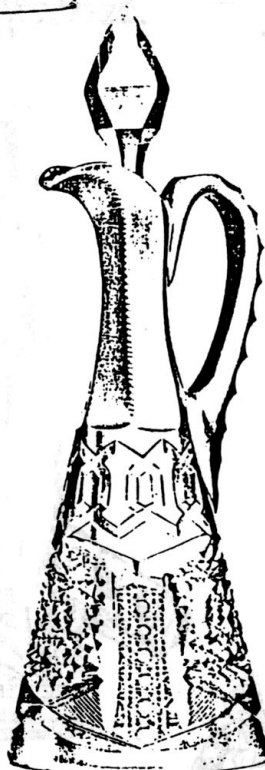
"No. 911."



"No. 913."



"No. 910."



"No. 1773."



"No. 914."



"No. 922."

"ALHAMBRA." (Patented.)

The Border is in Dull Finish.

No. 922 - Cherry Jar,	\$4.60	3.90	4.34
No. 914 - Catsup Bottle,	7.00	4.20	4.67
No. 1773 - Oil,	6.00	3.40	4.00

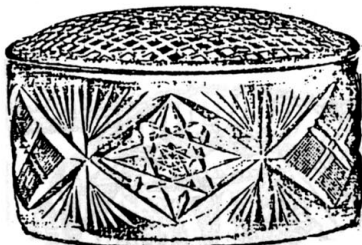
Five-eighths Size. Plate 331 G.

No. 808/E08. Mayonnaise Bowl and Plate,	\$13.00	7.50	8.67
No. 608. Sugar,	6.00	3.50	4.00
No. 628. Cream,	6.00	3.50	4.00

No. 910. Worcestershire Sauce Bottle,	\$4.50	3.50	4.00
No. 913 - Bitters Bottle. Sterling Top,	7.00	4.50	5.00
No. 911. Tobacco Sauce Bottle,	6.00	3.50	4.00



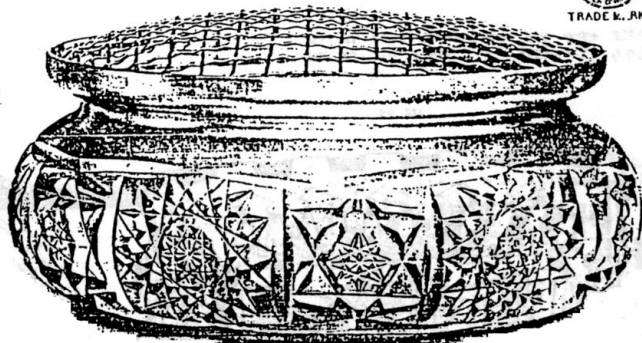
TRADE MARK



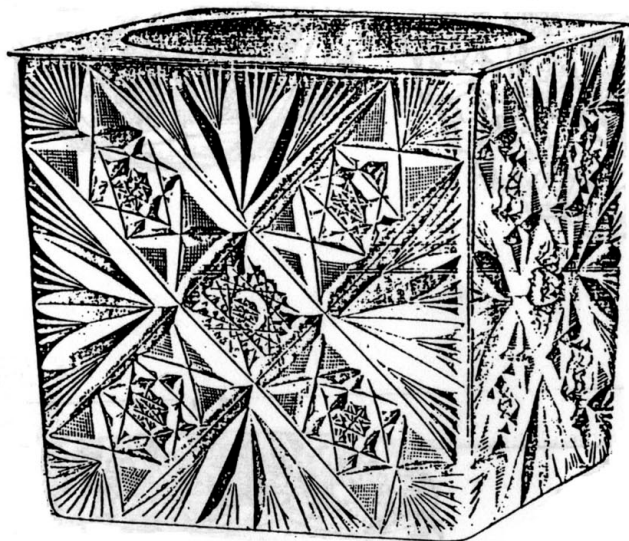
No. 1991. CUTTING "No. 219."



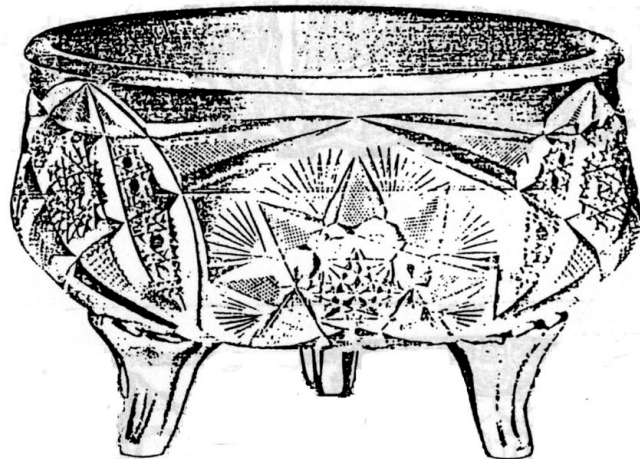
No. 1989. CUTTING "No. 121."



No. 998. CUTTING "No. 203."



No. 1987. CUTTING "No. 205."



No. 1990. CUTTING "No. 215."

FLOWER HOLDERS.

No. 1991.	CUTTING "No. 219,"	4 1/2 Inch,	\$3 00	7 1/2	2 00
" 997.	" " 203,"	7 1/2 "	6 25	3 1/2	3 50
" 918.	" " 61	" "	6 50	4 1/2	4 50
" 992.	" " 91	" "	8 00	5 1/2	5 50

With Silver Plated Wire Screens for Cut Flowers.

FLOWER POTS.

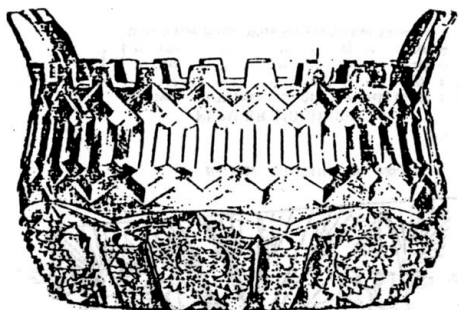
No. 1990. CUTTING "No. 215," 6 1/2 Inch, \$4 50
 No. 1067. CUTTING "No. 206," Square, 6 1/2 Inch, \$12 00

Fitted with Silver Plated Linings.

FERN DISH

No. 1000. CUTTING "No. 215," 6 1/2 Inch, \$11 00

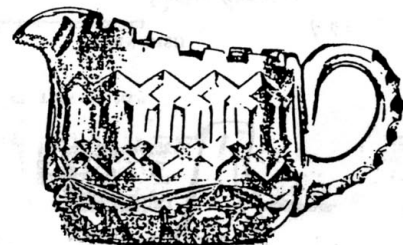
Can furnish.



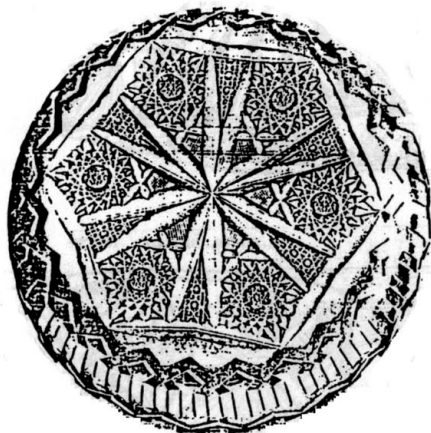
No. 72A.



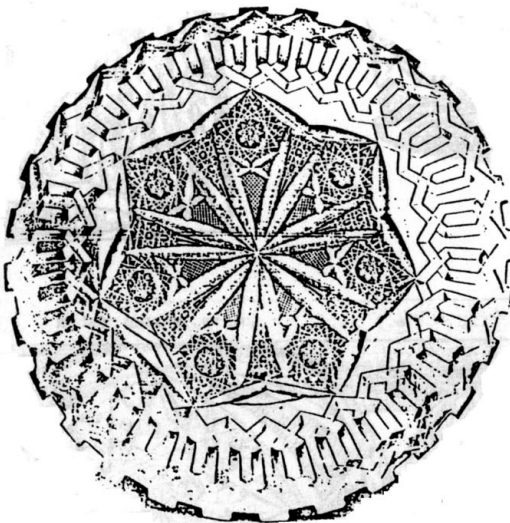
No. 611



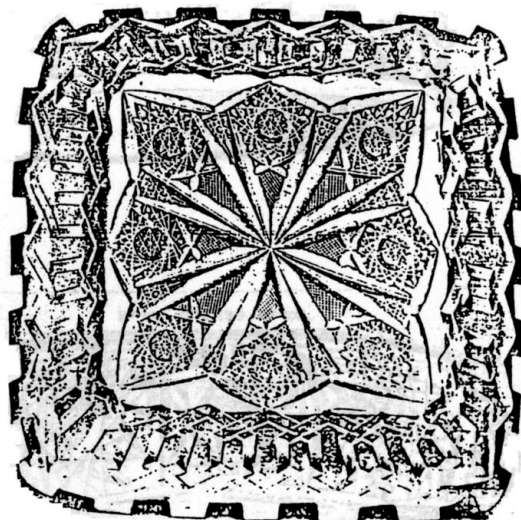
No. 622



No. 741



No. 760



No. 227

No. 72A. Ice Tub, \$14.00 ~~8.70~~ 9.34
 No. 741. Saucer, 6 inch, 6.60 ~~3.50~~ 3.67

"ALHAMBRA."
 No. 611. Sugar, \$6.00 } 7.20 8.00
 No. 622. Cream, 6.00 }

The border is in Dull Finish.

Five-eighths Size. Plate 322 G.

No. 700. Plate, 7 inch, \$7.00 ~~4.20~~ 4.67
 No. 227. Square Nappy, 7 inch, 7.50 ~~4.00~~ 5.66



No. 459. Cutting "No. 142"



No. 459. Cutting "No. 121"



No. 459. "Mayflower."



No. 460 F. Cutting "No. 163"



No. 466 F. Cutting "No. 194"



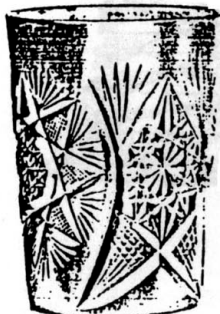
No. 467. "Plymouth"



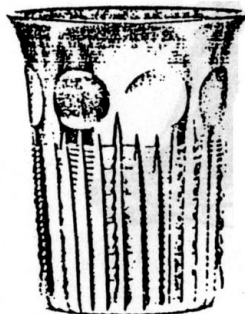
No. 468. Cutting "No. 126"



No. 467. "Thalia"



No. 465. "Plymouth."



No. 470. "Albany."



No. 465. Cutting "No. 136"



No. 465. "Sorois"



No. 465. "Alhambra."

TUMBLERS.

No. 459. Cutting "No. 142." \$13.35 Doz.
 No. 459. " " "No. 121." 11.00 "
 No. 459. "Mayflower" 16.70 "
 No. 460 F. Cutting "No. 163." 19.00 "

No. 466 F. Cutting "No. 194." 11.00 Doz.
 No. 467. "Plymouth" 18.00 "
 No. 468. Cutting "No. 126." 18.00 "
 No. 467. "Thalia" 20.00 "
 No. 465. "Plymouth." 22.00 "

No. 470. "Albany." \$23.00 Doz.
 No. 465. Cutting "No. 136." 24.00 "
 No. 465. "Sorois." 30.00 "
 No. 465. "Alhambra." (Patented), 36.00 "

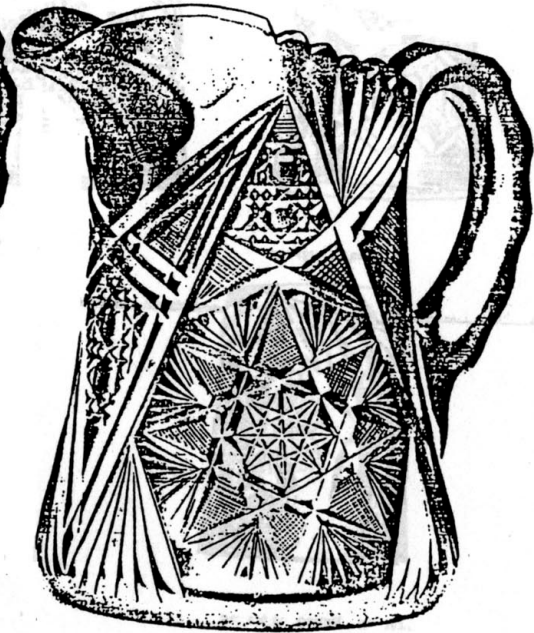
Five-eighths Size. Plate 374 G.



CUTTING "No. 208"
No. 751. Globe Water Bottle, 1 Quart, \$6.00 ~~5.00~~ 4.00



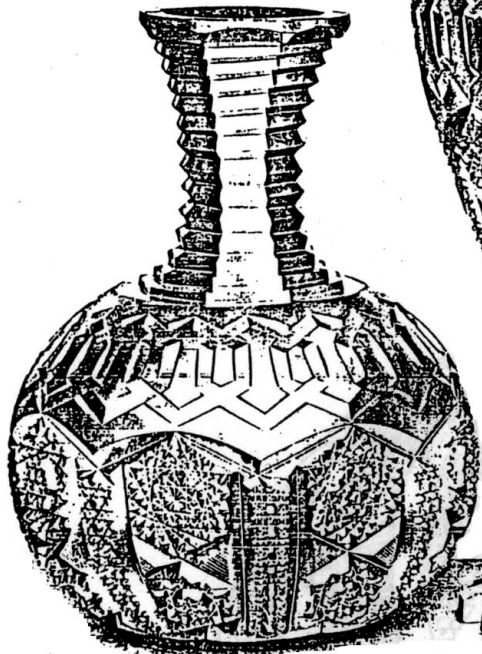
CUTTING "No. 142"
No. 528. Pitcher, 3 Pints, \$9.00 ~~7.50~~ 6.00



CUTTING "No. 220"
No. 527. Pitcher, 2 1/2 Pints, \$5.50 ~~4.50~~ 3.67



No. 465.



"ALHAMBRA."

No. 465. Half Pint Tumbler, \$48.00 Dozen. ~~24.00~~ 24.00
 No. 751. Water Bottle, 1 Quart, 13.00. ~~7.50~~ 8.67

No. 823. Pitcher, 3 Pints, \$25.00 Patented 16.67
 Jan. 17, 1911.
~~15.00~~

No. 635. Pitcher, 3 1/2 Pints, \$19.00 ~~11.00~~ 12.67

The Border is in Dull Finish.
 Two-thirds Size. Plate 324 G.