



No. 1020



No. 1021



No. 1022



No. 970



No. 974



No. 972



No. 708/250



No. 709

No. 1020	Ornate Glass Jar	Cutting	No. 1021	1 inch	10.00	6.00
No. 1022	Homely		1 1/2	0	7.00	7.00
No. 1023					4.00	7.50
No. 1024	Pub. Glass		3 1/2		4.50	7.50
No. 768	Oil		"No. 250"		3.25	1.95

COLOGNES				COLOGNES				COLOGNES					
No. 970	Cutting "No. 143,"	4 Oz.	\$3.75	2.50	No. 974	Cutting "No. 138"	4 Oz.	\$4.75	3.17	No. 972	4 Oz.	\$3.75	2.50
No. 971	" "	6 "	4.75	3.17	No. 975	" "	6 "	6.75	3.17	No. 973	6 Oz.	4.50	3.17
No. 972	" "	8 "	5.75	3.14	No. 976	" "	8 "	6.75	3.14	No. 974	8 Oz.	4.50	3.17
No. 973	" "	10 "	7.00	4.27	No. 977	" "	10 "	8.00	4.27	No. 975	10 Oz.	4.50	3.17
No. 974	Oil	"Thalia"		\$1.00									



No. 1028. Cutting "No. 116"



No. 1046. "Mayflower."



No. 1047. "Mayflower."



No. 927. "Mayflower."



No. 971. Cutting "No. 143"



No. 938. "Mayflower."



No. 976. Cutting "No. 136"



No. 975. Cutting "No. 136"



No. 928. "Mayflower."

COLOGNE BOTTLES.

No. 1028. Cutting "No. 116," Puff. 5	inch, \$4.00	No. 974. Cutting "No. 136," 4 oz., \$4.75	No. 970. Cutting "No. 143," 4 oz., \$3.75	No. 927. "Mayflower," Cigarette Jar, \$3.50
No. 1046. "Mayflower," " 5	4.80	" 6 " 5.75	" 6 " 4.75	" Cigar Jar, 6.00
No. 1047. Jewel-Box, 5	7.50	" 8 " 6.75	" 8 " 5.75	
		No. 976. " " 10 " 8.00	No. 972. " " 10 " 7.00	
		No. 977. " " 10 " 8.00	No. 973. " " 10 " 7.00	
		No. 978. " " 10 " 8.00		
		No. 979. " " 10 " 8.00		
		No. 980. " " 10 " 8.00		
		No. 981. " " 10 " 8.00		
		No. 982. " " 10 " 8.00		
		No. 983. " " 10 " 8.00		
		No. 984. " " 10 " 8.00		
		No. 985. " " 10 " 8.00		
		No. 986. " " 10 " 8.00		
		No. 987. " " 10 " 8.00		
		No. 988. " " 10 " 8.00		
		No. 989. " " 10 " 8.00		
		No. 990. " " 10 " 8.00		
		No. 991. " " 10 " 8.00		
		No. 992. " " 10 " 8.00		
		No. 993. " " 10 " 8.00		
		No. 994. " " 10 " 8.00		
		No. 995. " " 10 " 8.00		
		No. 996. " " 10 " 8.00		
		No. 997. " " 10 " 8.00		
		No. 998. " " 10 " 8.00		
		No. 999. " " 10 " 8.00		
		No. 1000. " " 10 " 8.00		



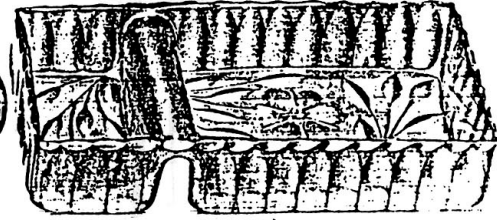
No. 1940



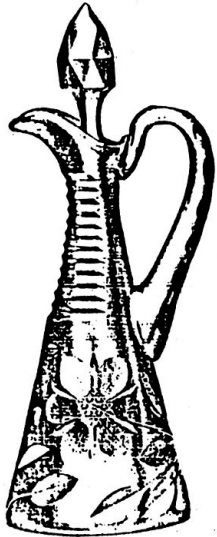
No. 1941



No. 1942



No. 918



No. 1773



No. 1776



No. 771. "Barclay."



No. 771. Cutting "No. 143"



No. 772

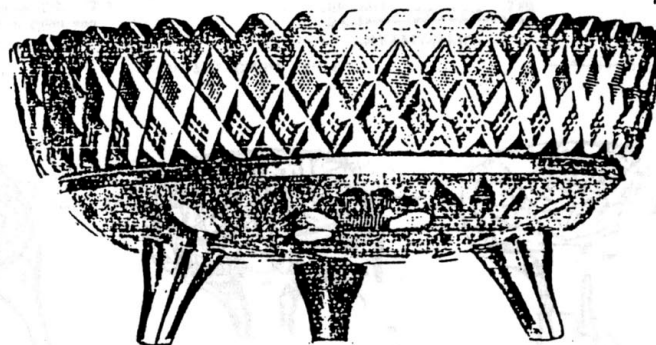
OILS.			
No. 1773.	"Mayflower."	\$3.25	4.44 2.17
No. 1776.	"Barclay," Patent	1.50	2.00
No. 771.	"Barclay."	3.00	4.00 2.00
No. 771.	Cutting "No. 143."	3.00	4.00 3.00
No. 772.	"Warren."	2.50	3.00

No. 918. Sardine and Lemon or Cigar and Cigarette Holder, \$4.60 ~~5.00~~ 3.00

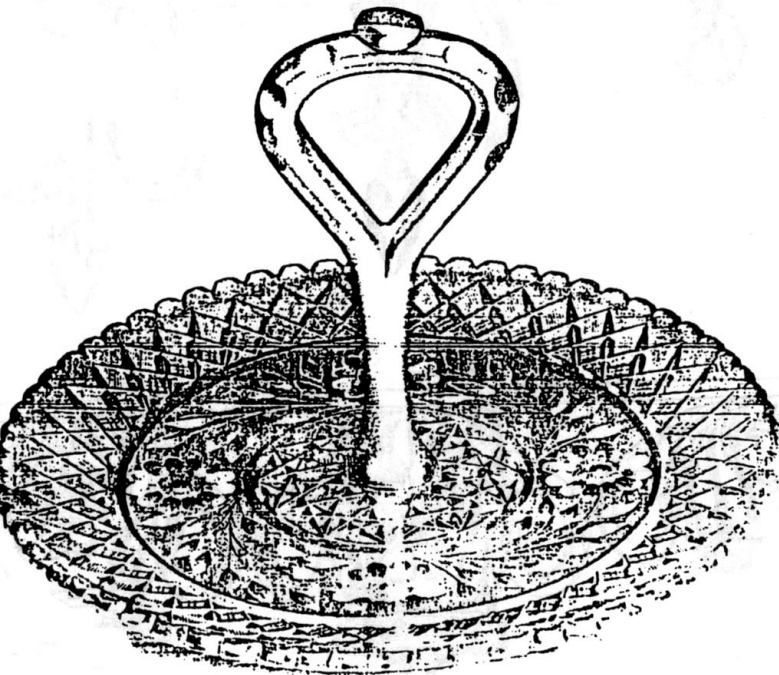
"MAYFLOWER."
 No. 1940 - Jar and Jar - \$3.50
 No. 1941 - Jar and Jar - 3.50
 No. 1942. Preserve Jar, 4.60 ~~5.00~~ 3.00



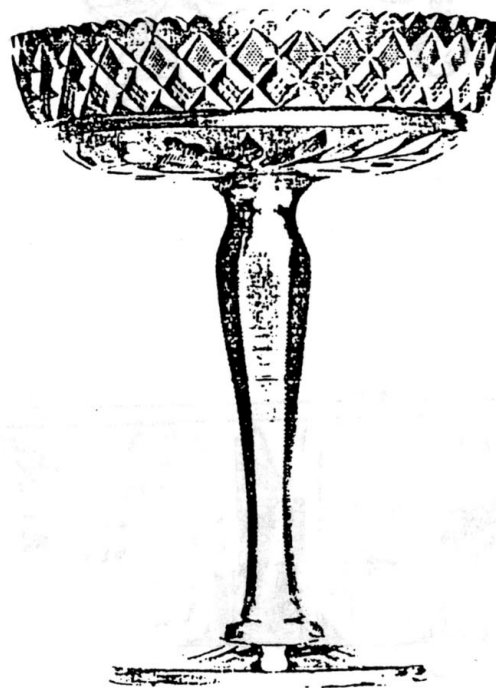
No. 2250



No. 298



No. 763



No. 2251

No. 2250. Comport, 5 inch Diameter, \$3.50
 No. 763. Handled Plate, 10 inch, 9.00

Cutting "No. 310"

No. 294. Footed Nappy, 6 inch 4 - - 5
 No. 297. Footed Nappy, 7 inch, \$4.85 - - 15
 No. 298. " " " " 6.20 - - 15
 No. 2251. (Comport, 6 inch Diameter, \$1.85 - 17



No. 459. Cutting "No. 142"



No. 459. Cutting "No. 121"



No. 469. "Mayflower."



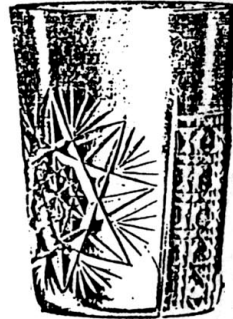
No. 466. Cutting "No. 163"



No. 460. Cutting "No. 184"



No. 467. "Plymouth"



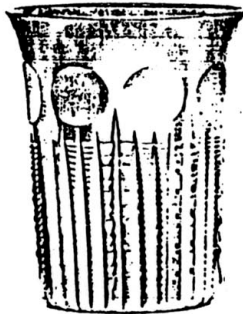
No. 458. Cutting "No. 126"



No. 467. "Thalia"



No. 465. "Plymouth."



No. 470. "Albany."



No. 465. Cutting "No. 136"



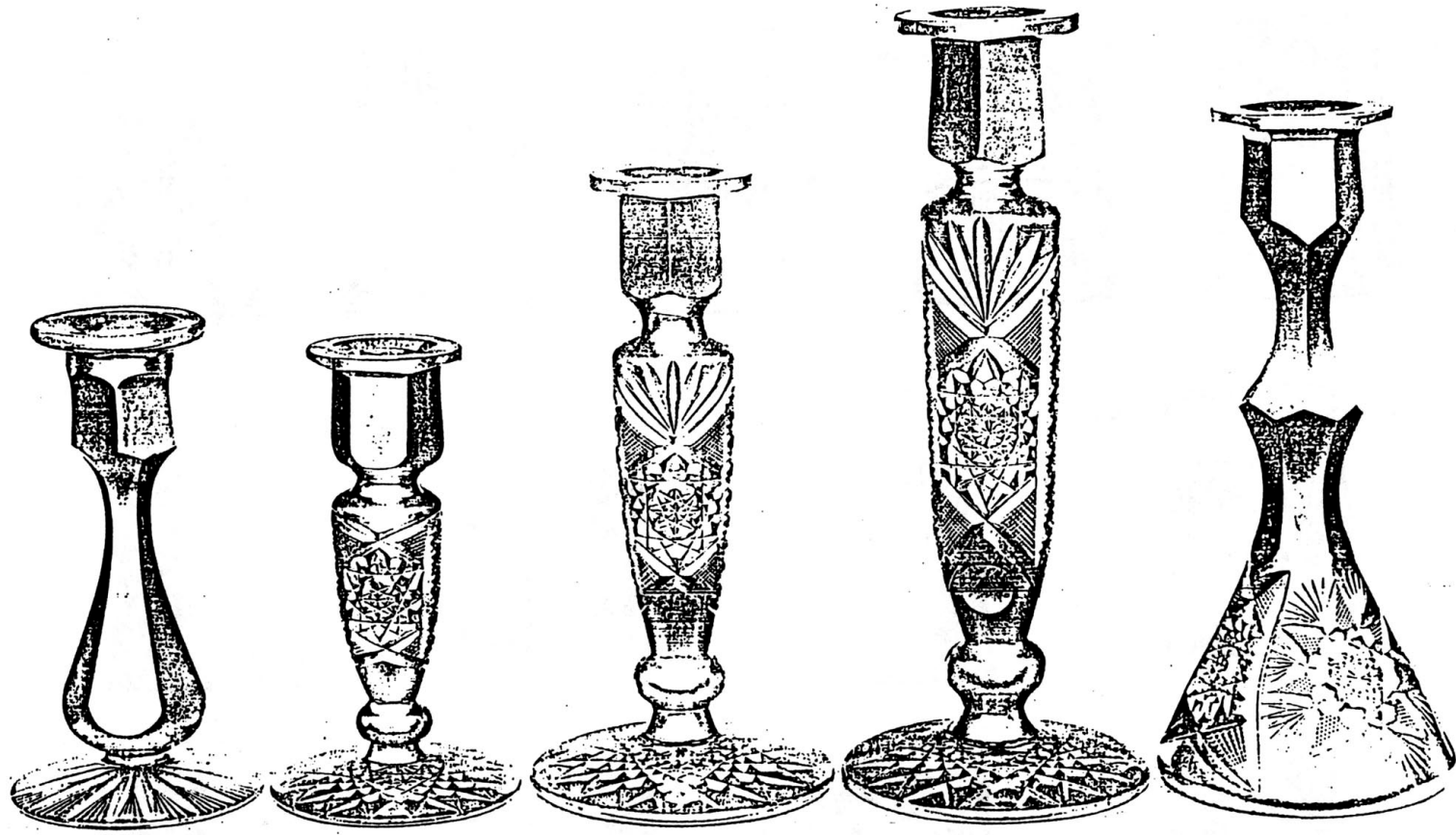
No. 465. "Sorosis"



No. 465. "Alhambra"

TUMBLERS.

6.67	No. 459.	Cutting "No. 142."	\$10 00	Doz.	6.67	No. 460.	Cutting "No. 184."	\$12 00	Doz.	7.34
7.34	No. 459.	"No. 121."	11 00		6.67	No. 467.	"Plymouth"	14 00		7.34
8.67	No. 459.	"Mayflower"	13 00		7.34	No. 458.	Cutting "No. 126."	14 50		8.67
	No. 460.	Cutting "No. 184"	13 00			No. 467.	"Thalia"	20 00		
						No. 455.	"Plymouth."	22 00		14.67
						No. 470.	"Albany."	\$23 00	Doz.	15.24
						No. 465.	Cutting "No. 136."	24 00		16.00
						No. 465.	"Sorosis"	30 00		15.00
						No. 465.	"Alhambra." (Patented)	36 00		21.60
										24.00



"PURITAN"

No. 965. 6 in. High, \$3.00
~~1.96~~ 4.50
~~1.66~~ 2.00

No. 966. 6 in. High, \$5.60 ~~2.20~~ 3.67

CUTTING "No. 120."

No. 967. 8 in. High, \$7.00 ~~4.20~~ 4.67

CANDLESTICKS.

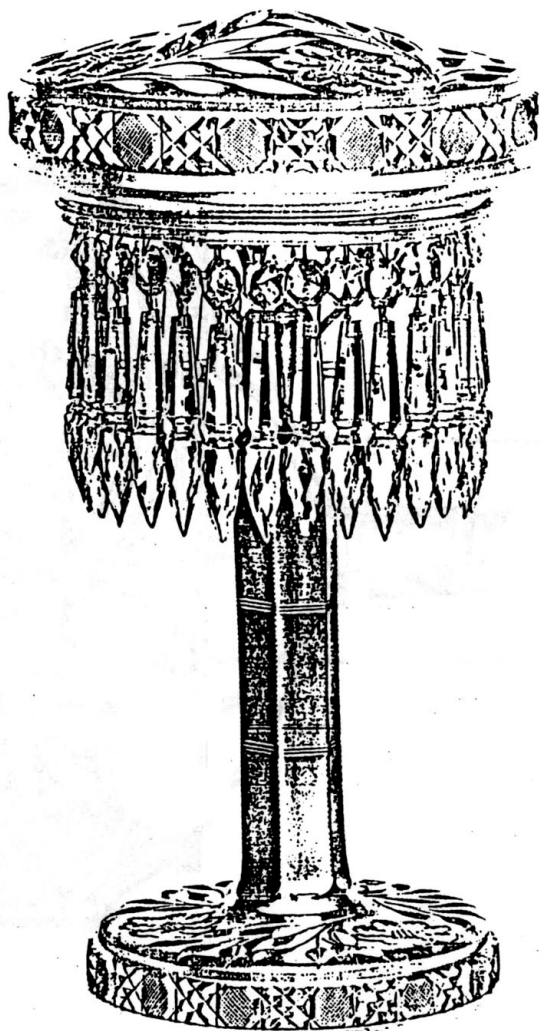
Fitted with Silver Plated Sockets.

Two-thirds Size. Plate 240 G.

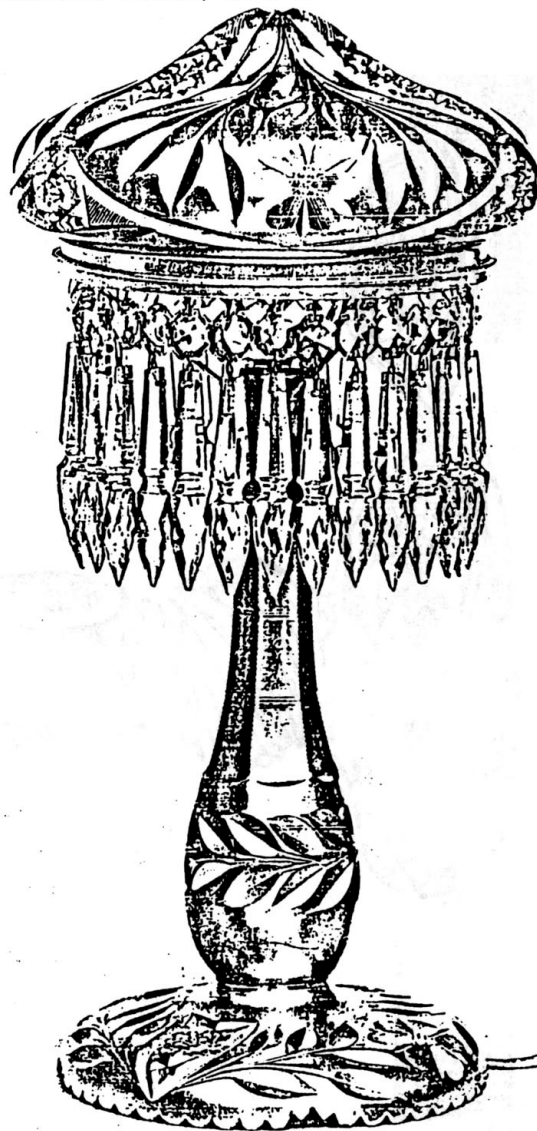
No. 968. 10 in. High, \$8.60 ~~5.40~~ 5.67

"PLYMOUTH"

~~No. 969. 8 in. High, \$8.00~~ ~~4.50~~



No. 953. "SOROSIS." \$24.00 ~~16.00~~
13 1/2 inches High. Shade 7 1/2 inches Diameter



No. 954. "SHIRLEY." (Patented) \$24.00 ~~16.00~~
14 1/2 inches High. Shade 7 1/2 inches Diameter.

ELECTROLIERS.

Complete with Attachments.