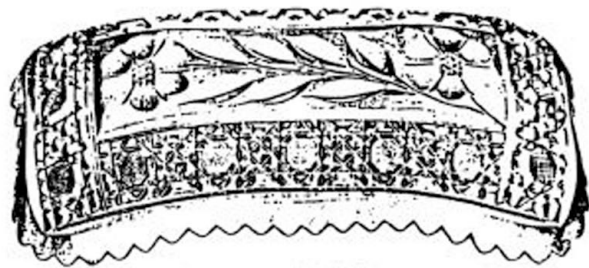




No. 208 F



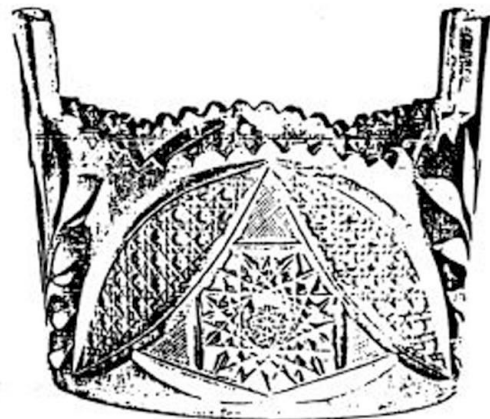
No. 1791 F



No. 1720 F



No. 766 F



No. 711 F

No. 208 F. Cutting "No. 270," Two Handled Nappy, 8 inch. \$2.84 <sup>1-19</sup>  
 No. 1792 F. " " "No. 218," Spoon Tray, 8 inch. <sub>1-5</sub>  
 No. 766 F. Cutting "No. 264," Plate, 7 1/2 inch, 13.60 <sup>2-34</sup>  
 No. 1720 F. Cutting "No. 279," Ice Tub, 8 inch. \$3.50 <sup>2-34</sup>  
 No. 711 F. " " "No. 272," " " 7 " 6.50 <sub>2-34</sub>



No. 810/811 F. Cutting "No. 200"



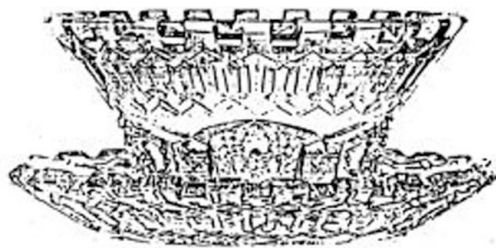
No. 814 F. Cutting "No. 200"



No. 817. "Mayflower"



No. 808/809. "Bacopa"



No. 809/809. "Alhambra"



No. 805/809 F. "Shirley"

MAYONNAISE BOWLS AND PLATES.

No. 810/811 F. Cutting "No. 200," \$4.00 ~~4.50~~ 3 C  
 No. 810/809. "Bacopa," 11.00 ~~12.00~~ 7 1/2 C

No. 814 F. Cutting "No. 200," 14.00  
 No. 817/809 "Alhambra," (Patented), 13.00 ~~14.00~~ 1 C

No. 817. "Mayflower" 16.50 ~~18.00~~ 4.35  
 No. 805/809 F. "Shirley," (Patented), 6.25 ~~7.00~~ 4.17

Five-eighths Size. Plate 300 G.



No. 524. "Albany." 3½ Pints, \$10.00



No. 831. Cutting "No. 231," 3 Pints, \$15.00



No. 318. Cutting "No. 235," 3½ Pints, \$8.50

PITCHERS.



## PITCHERS.

No. 555. Cutting "No. 124,"  $\frac{3}{4}$  Pint, \$13.00 ~~to~~ 8.67

No. 528. Cutting "No. 125,"  $\frac{3}{4}$  Pint, \$10.00 ~~to~~ 6.67

No. 536. Cutting "No. 126,"  $\frac{3}{4}$  Pint, \$10.50 ~~to~~ 7.00



5



CUTTING "No. 305"

No. 638. Pitcher, 3 Pints, \$8.75 5.44  
 No. 638. " 3 1/4 " 10.56 7.24  
 No. 465. Tumbler, 1/2 " 26.70 Doz. 17.50

"PATRICIAN" (Patented)

No. 1623. Oval Pitcher, 3 Pints, \$19.20 / 2.50

"PATRICIAN" (Patented)

No. 635. Pitcher, 3 1/4 Pints, \$18.70 11.14  
 No. 465. Tumbler, 1/2 " 30.00 Doz. 20.00



No. 459



No. 458



No. 781

"MAYFLOWER"

No. 781. Glass Water Bottle, 1 Quart, 15.00 ~~15.75~~ 3.67  
 No. 459. Half Pint Tumbler, Dozen, 13.00 ~~13.75~~ 5.47



No. 825

CUTTING "No. 217"

No. 825. Pitcher, 4 1/2 Pints, \$18.00 ~~18.75~~ 5.47



No. 831

"SOLIGORIS"

No. 831. Pitcher, 3 Pints, 18.50 ~~19.25~~ 5.67  
 No. 609. Half Pint Tumbler, Dozen, 15.00 ~~15.75~~ 5.00



No. 633



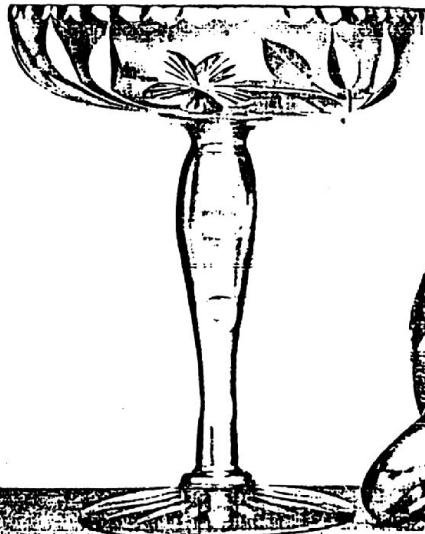
No. 613



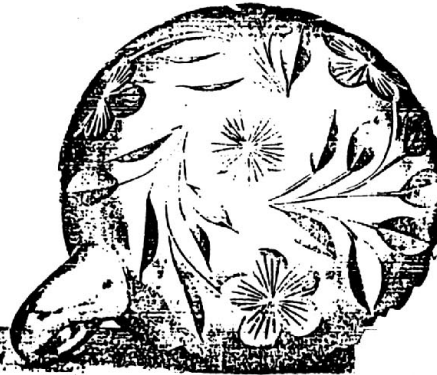
No. 790



No. 611



No. 1268



No. 231



No. 741

CUTTING "No. 280"

No. 613. Sugar,	\$1 07	} 1.95 2.23
No. 633. Cream,	1.07	
No. 790. Spoon Tray, 8 inch, 2 20	1.35 1.50	

No. 1268. Comport, 6 inch. \$3 34 ~~2.20~~ 2.23

No. 231. Handled Nappy, 6 inch.	\$23.00	Doz.	<del>15.00</del> 15.00
No. 741. Saucer,	8 "	21.00	<del>14.00</del> 14.00
No. 611. Celery,	11 1/2 "	5.00	<del>2.40</del> 2.40