

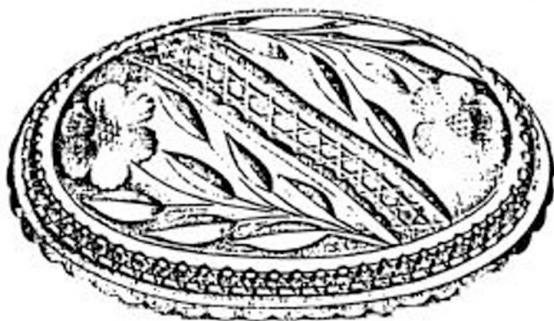
No. 1296. CUTTING "No. 204" VASE, 12 INCH, \$6.75

No. 1299. "BOROSIS" COPPORT, \$13.00  
8 inch Diameter 11 inch High

No. 1311.	"BOROSIS" VASE, 8 INCH,	\$6.00	- 20
No. 1312.	" "	10 "	8.50 - 1
No. 1313.	" "	12 "	11.00 - 70
No. 1314.	" "	14 "	14.00 - 10
No. 1315.	" "	16 "	18.00 - 6
No. 1316.	" "	18 "	22.00 - 1



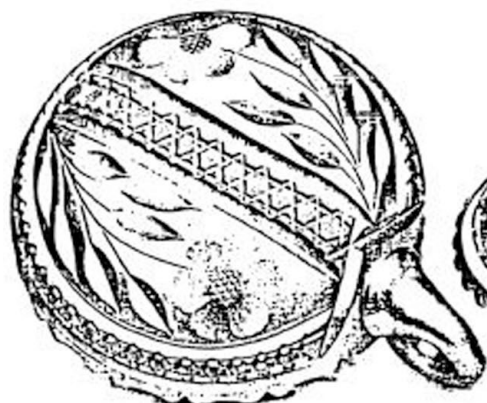
No. 741



No. 798



No. 741



No. 231

Cutting "No. 306"

No. 741. Saucer, 8 inch.     \$2.85  
 No. 231. Handled Nappy, 8 inch, 2.30



No. 799

Cutting "No. 306"

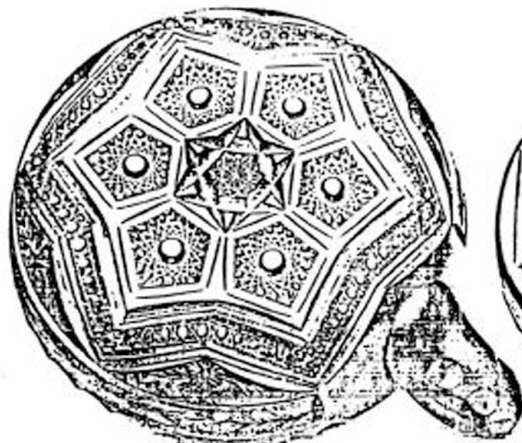
No. 798. Spoon Tray or Hum. Bot. 8 inch, 13.20  
 No. 799. " " " " " 14 "     3.40-17



No. 231

Cutting "No. 309"

No. 741. Saucer, 8 inch.     \$2.70  
 No. 231. Handled Nappy, 8 inch, 2.30



No. 231. "Patrician."



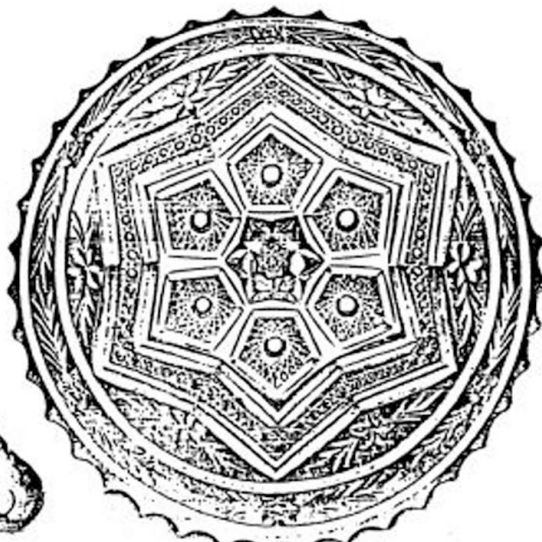
No. 316. "Patrician."



No. 741. "Patrician."



No. 231 F. Cutting - No. 301"



No. 760. "Patrician."



No. 741 F. Cutting - No. 304"

"PATRICIAN" (Patented)  
 No. 231. Kappy, 8 inch, \$5.40  
 No. 741. Bawcer, 8 " 5.40

"PATRICIAN" (Patented)  
 No. 316. Olive or Bon Bon, 7½ inch, \$3.85  
 No. 348. " " " " " " 8.30  
 No. 760. Plate, 7 inch, 5.85

CUTTING - No. 304"  
 No. 231 F. Kappy, 8 inch, 13.35  
 No. 741 F. Bawcer, 8 " 12.90



No. 655



No. 611



No. 704



No. 1208



No. 231



No. 741

No. 611

## CUTTING "No.-280"

No. 611. Bogar, \$1.67  
 No. 633. Crown, 1.67  
 No. 700. Spoon Tray, 8 inch, 2.28

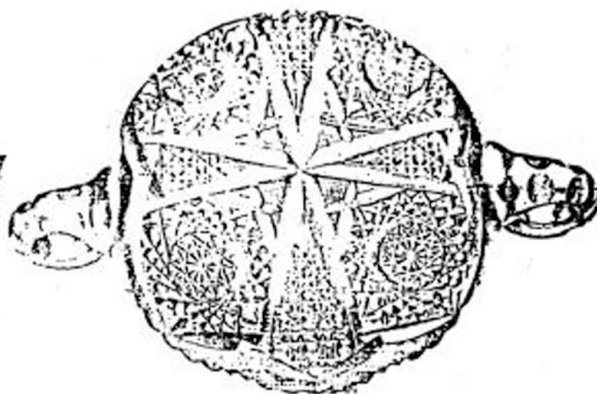
No. 1208. Comport, 6 inch, \$3.54

No. 231.Handled Nappy, 6 inch, \$25.00 Doz.  
 No. 741. Saucer, 6 " " 21.00 "  
 No. 611. Celery, 11 1/2 " 3.60

One-half Size. Plate 421 G.



No. 216 F. — No. 258 A.



No. 240 F. — No. 240 G.

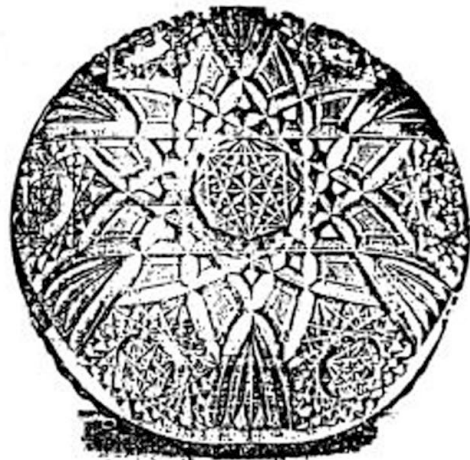
240 -



No. 74. "BOROSIS."  
L.G.



No. 208 "MAYFLOWER"

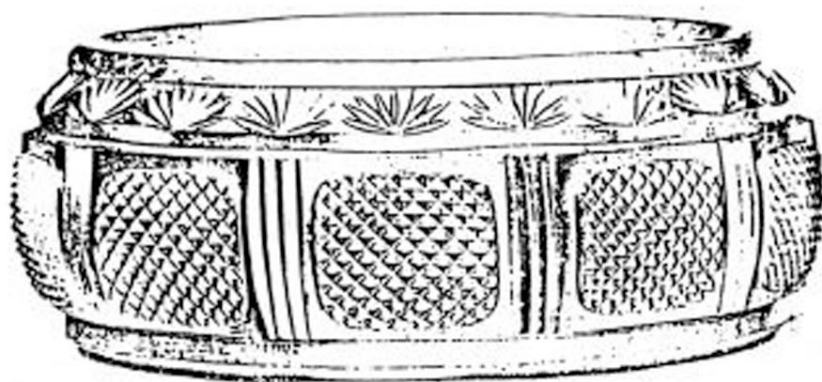


No. 200 F. "No. 218."

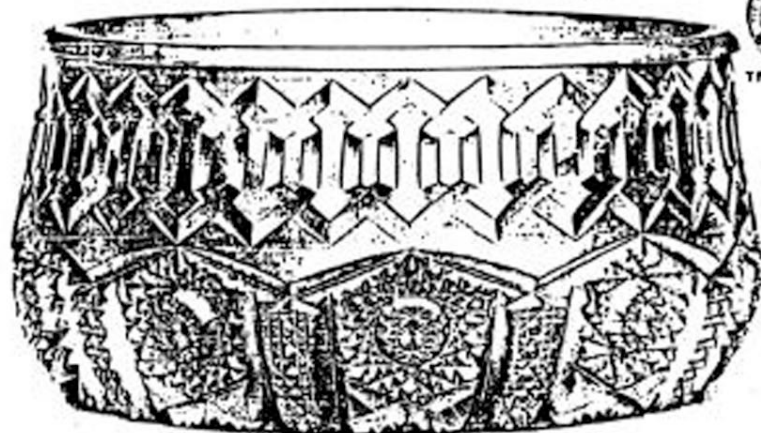
No. 208 F. "LITTLE" No. 216 "TWO HANDED NAPPY" 6 INCH. 12.50  
 No. 200 F. " " " " " " " " 3.10  
 No. 216 F. " " " " " " " " 3.25

No. 74. "BOROSIS" SAUCER, 6 INCH. 14.00  
 No. 208 "MAYFLOWER" — 8 INCH. AND COMB. TRAY — 12 1/2 INCH. 2.47

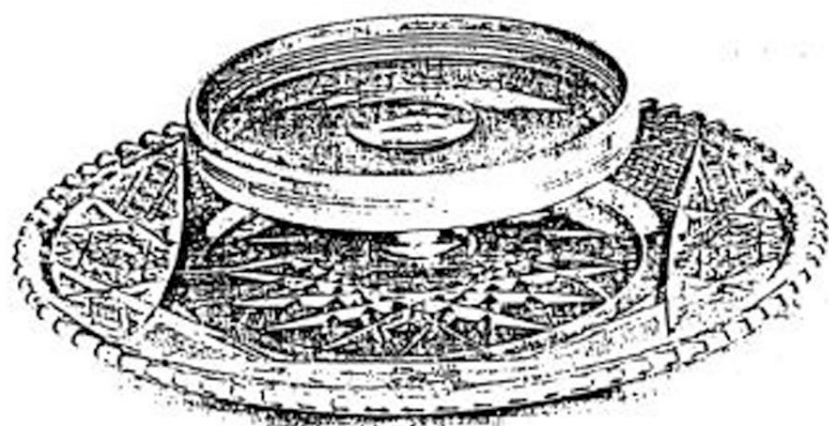




No. 96



No. 96



No. 813



No. 251

No. 96. "Old Irish" Fern Dish, 8 inch, 21.00  
 No. 813. "Old Irish" Fern Dish, 8 inch, 21.00  
 No. 813. "Old Irish" Fern Dish, 8 inch, 21.00  
 No. 813. "Old Irish" Fern Dish, 8 inch, 21.00

Ferns Fitted With Silver Plated Linings

No. 96. "Alhambra" Fern Dish, 8 inch, \$19.00 ~~21.00~~ 12.67  
 No. 251. "Alhambra" Fern Dish, 8 inch, 21.00 ~~21.00~~ 14.67  
 The Border is in Dull Finish.



No. 248



No. 243



No. 1016 F. Cutting "No. 246"



No. 1013. "Mayflower."



No. 1018 F. Cutting "No. 249"

BASKETS.

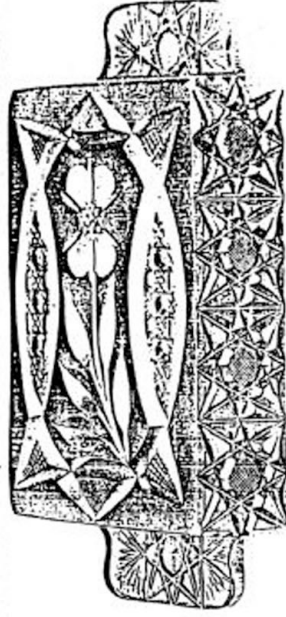
No. 1018 F.	Cutting "No. 249."	7 1/2 inch.	\$3.00
No. 1016 F.	"No. 246."	6 inch.	2.25
No. 1013.	"Mayflower."	6 inch.	2.50

OLIVE OR BON BONS

No. 1 F.	Cutting "No. 291."	7 1/2 inch.	\$3.00
No. 1.	"No. 302."	8 inch.	2.00



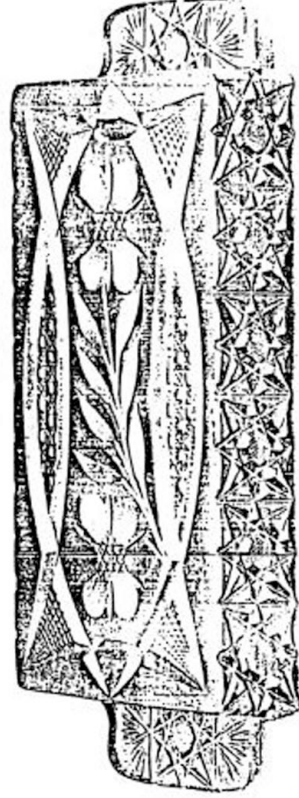
THE MERIDEN CUT GLASS CO., MERIDEN, CONN., U. S. A.



No. 1306 F.



No. 1304 F.



No. 1308 F.



No. 1307 F.

CUTTING "No. 293."

No. 1304 F. Domino Sugar Tray, 7 inch, \$2.00 *minus* A. 34  
 No. 1306 F. Water Tray, 5 inch.  
 No. 1307 F. Unseeded Bluetray, 8 1/2 inches, \$4.75 *plus* J. 17  
 No. 1308 F. Domino Sugar Tray, 7 inch, \$2.00 *minus* A. 34

Fourth-size Size. Plate 145 G.