

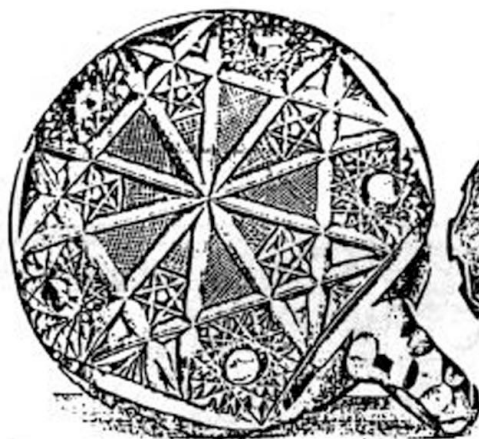
No. 740 F.



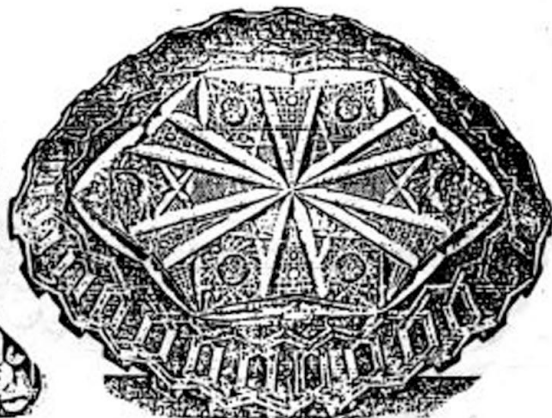
No. 798 F.



No. 909



No. 230 F.



No. 242



ROUND SAUCERS.
 No. 740 F. Cutting "No. 166," 8 inch, \$20.00 doz.
 No. 741 F. " " " " " " 23.00 " " 15.34
ROUND HANDLED SAPPERS.
 No. 230 F. Cutting "No. 166," 6-inch, \$22.00 doz.
 No. 231 F. " " " " " " 25.00 " " 16.67

OLIVER, BON BONS OR SPOON TRAYS.
 No. 212 F. Cutting "No. 131," 7 1/2 inch, \$3.50
 No. 212 "Alhambra," (Patented,) 7 1/2 inch, 3.75
 No. 798 F. Cutting "No. 202," 8 inch, 2.10 " 1.67

LAPIDARY KNIFE RESTS.
 No. 909, 4 1/2 inch, \$16.50 dozen 7.75 11.00
 No. 910, 4 1/2 " " 24.00 " " 16.00
 No. 911, 8 1/2 " " 20.00 " " 22.00 28.00
 In Badly Lined Boxes.

The Knives on No. 909 are smaller than on No. 910



No. 458. Cutting "No. 285"



No. 455. "Alhambra"



No. 833. Cutting "No. 285"



No. 833. "Borealis"



No. 555. "Alhambra."

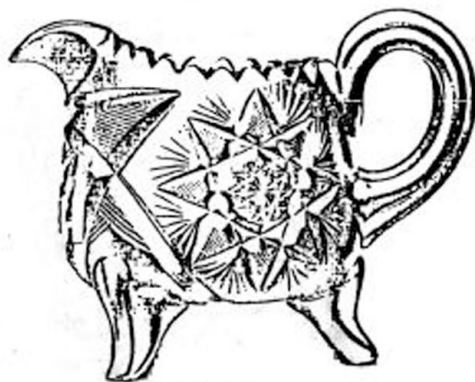
CUTTING "No. 285"
 No. 833 Pitcher, 3 Pints, \$13.00 *2.20 8.00*
 No. 455 Tumbler, 37.00 Doz. *16.20 18.00*

"BORNEIS"
 No. 833 Pitcher, 3 Pints, \$10.00 *6.00 6.67*
 No. 455 Tumbler, 30.00 Doz. *16.20 20.00*

"ALHAMBRA" (Patented)
 No. 555 Pitcher, 3 Pints, \$19.00 *13.67*
 No. 455 Tumbler, 35.00 Doz. *25.00*
 The border is in Dull Finish.



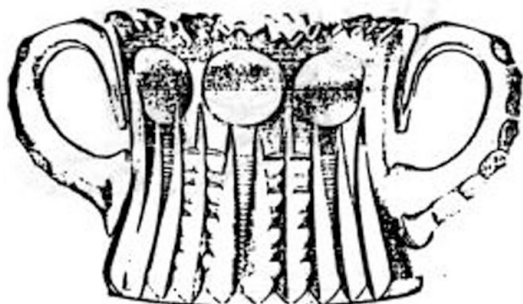
No. 628



No. 1621



No. 622



No. 608



No. 1601



No. 611

SUGARS AND CREAMS.

No. 628. "Albany," Cream, \$3.75
 No. 608. "Albany," Sugar, 3.75

No. 1621. "Plymouth," Cream, \$3.50
 No. 1601. "Plymouth," Sugar, 3.50

No. 622. Cutting "No. 209," Cream, \$2.75
 No. 611. Cutting "No. 209," Sugar, 2.75

Two-thirds Size. Plate 314 G.



No. 655



No. 658



No. 672



No. 613



No. 608



No. 611

SUGARS AND CREAMS.

No. 633. Cutting "No. 143," Cream, \$2.00 } ← 267
 No. 612. " " Sugar, 2.00

No. 628. "May Flower," Cream, \$3.50 } ← 467
 No. 608. " " Sugar, 3.50

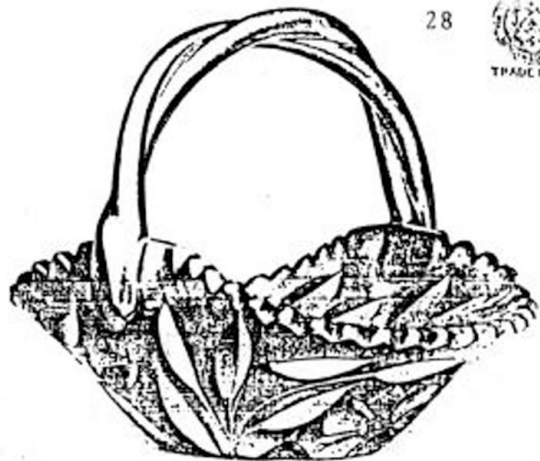
No. 672. Cutting "No. 167," Cream, \$2.50 } ← 384
 No. 611. " " Sugar, 2.00



No. 697 F



No. 635



No. 1013



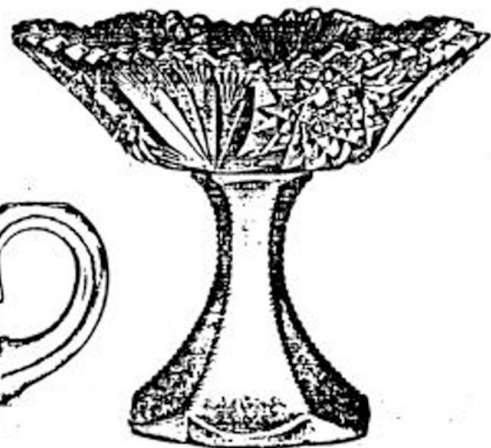
No. 619 F

CUTTING "No. 101"
 No. 630 F. Cream, \$1.75 } 2.75 2.37
 No. 619 F. Sugar, 1.25 }



No. 615

CUTTING "No. 298"
 No. 635. Cream, \$2.00 } 2.67
 No. 616. Sugar, 7.00 }

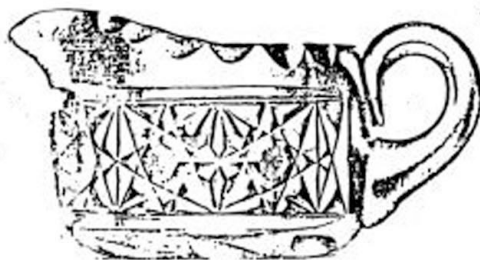


No. 1252 F

No. 1013. "MAYFLOWER," Basket, \$3.00 ~~4.00~~ 2.25
 Length, 6 inches Diameter, 4 inches
 No. 1252 F. CUTTING "No. 701," Carport, \$3.00 ~~4.00~~ 2.00
 Diameter, 6 1/2 inches Height, 4 inches



No. 815 F.



No. 636 F.



No. 1890 F.



No. 2382 F.



No. 818 F.

CUTTING "No. 288."

No. 815 F. Sugar, \$1.88 } 225 2.50
 No. 636 F. Cream, 1.88

No. 818 F. Mayonnaise Bowl and Plate, \$1.75 ~~2.00~~ 2.50
 No. 2382 F. Compot, 6 inch Diameter, 3.80 ~~4.00~~ 2.34

No. 1890 F. Vase, 10 inch, \$3.50 ~~4.00~~ 2.34



No. 1021



No. 1022



No. 1023 F.



No. 1001



No. 604



No. 1003 F.

SUGARS AND CREAMS.

No. 1021 Cutting No. 275, Cream, \$1.25 } 4.00 5.00
 No. 1001 " " " Sugar, \$ 75 }

No. 624—Blirley (Patented) Cream, \$1.75
 No. 104 " " " " Sugar, \$ 4.75 }

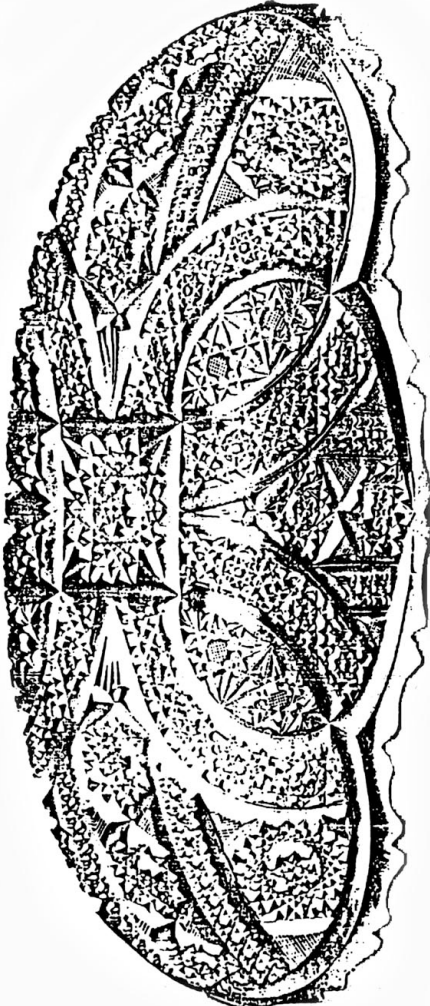
No. 1023 F. Blirley (Patented) Cream, \$1.75 } 4.50
 No. 1003 F. " " " " Sugar, \$ 3.75 }



No. 1801 F. CUTTING "No. 301"



No. 810. CUTTING "No. 302"



No. 810 F. CUTTING "No. 293"

CELERY TRAYS.

No. 1801 F. Cutting "No. 301."	Length.	11	inches.	4.87
No. 810 F. Cutting "No. 302."	"	12	"	7.63
No. 810 F. Cutting "No. 293."	"	12	"	7.88

Three-fourths Size. Plate 400 G.