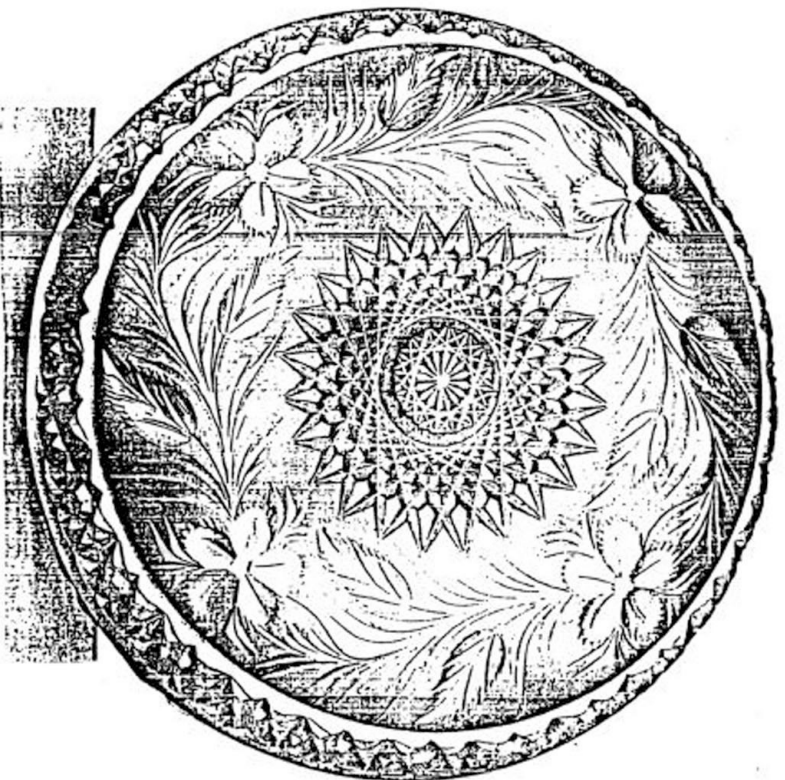


BOWL



NAPPY

CUTTING "No. 304"

FRUIT OR SALAD BOWL.
No. 101. 8 inch. \$7.10 9 7/4
No. 102. 9 inch. \$7.75 5 8/4

ROUND NAPPY.
No. 201. 8 inch. \$6.40 3.60
No. 202. 9 inch. \$6.60 4.44



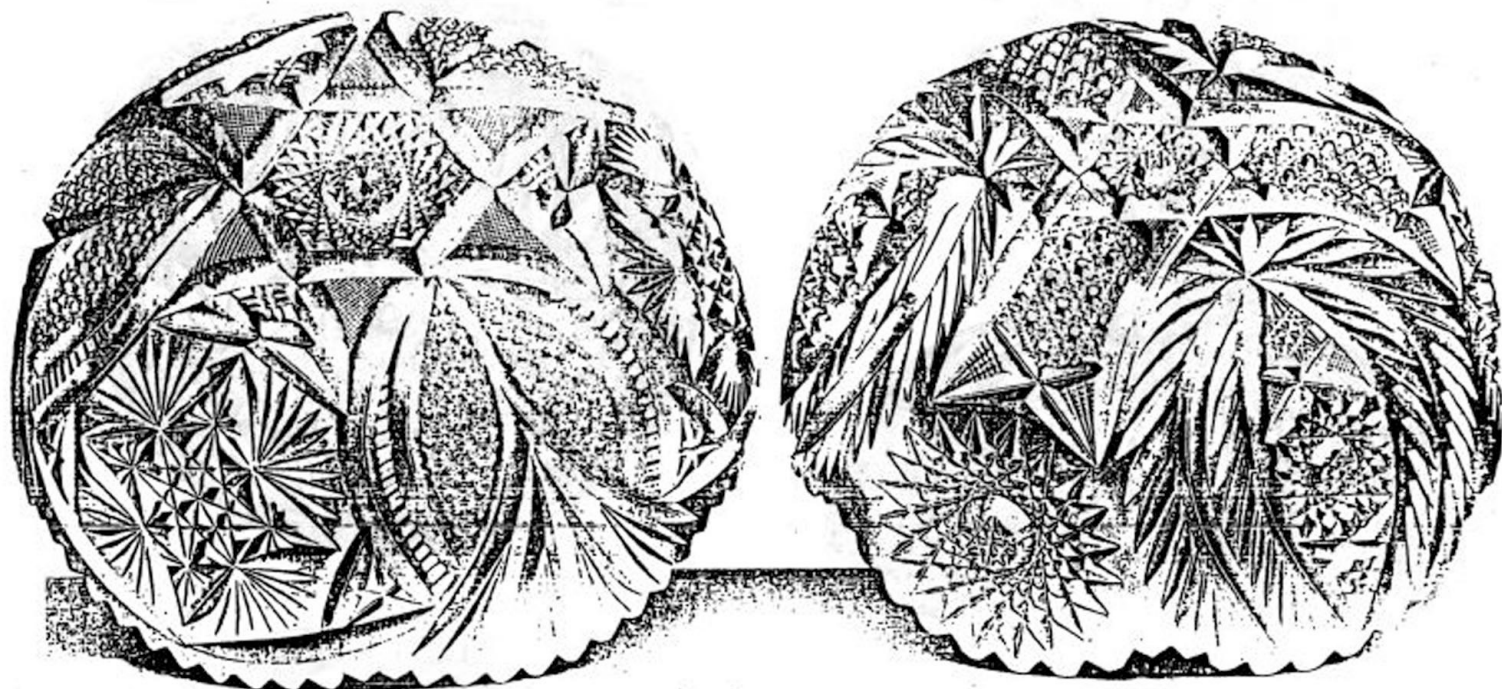
TRADE MARK



CUTTING "No. 289".

No. 101 F. BOWL, 8 inch. \$5.00 *2.40*

No. 128 F. FOOTED BOWL, 8 inch. \$9.00 *6.34*
Foot can be used separately as a Comport,
as shown above.

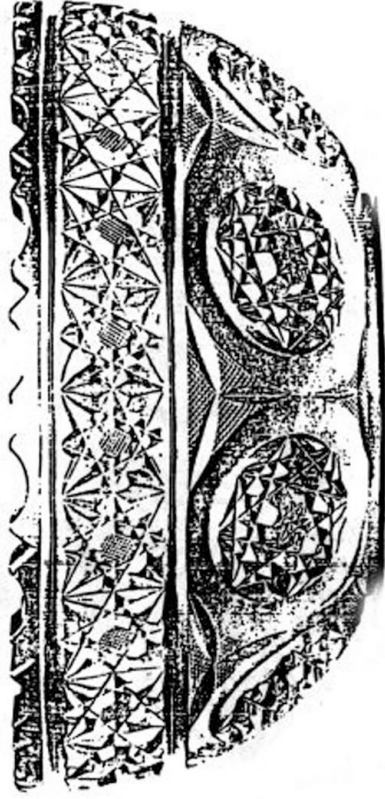


ROUND FRUIT OR SALAD BOWLS.

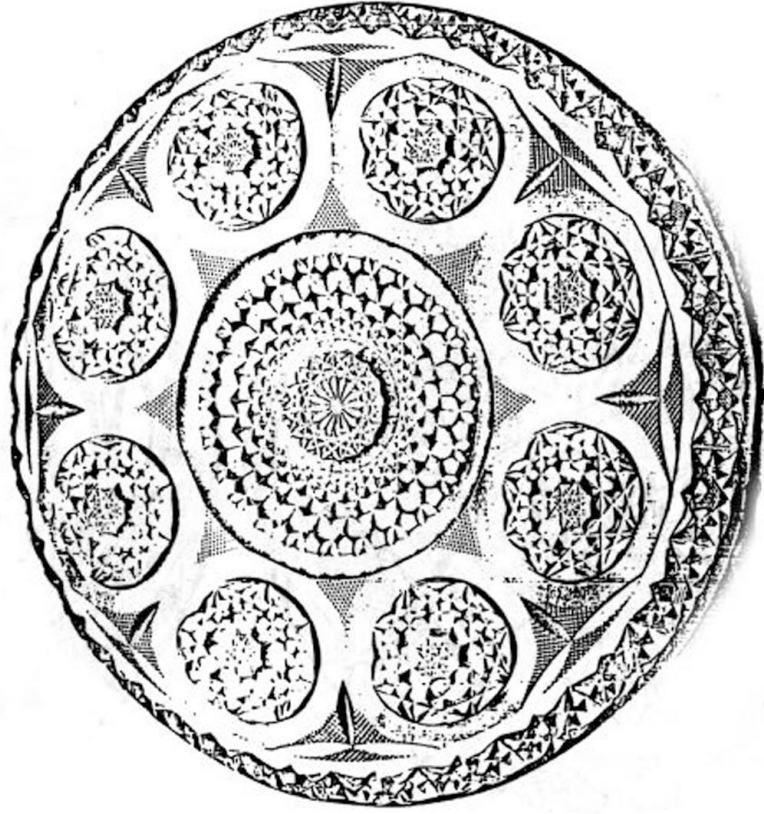
No. 101 F. Cutting "No. 217," 6 Inch, \$4.75.

No. 101 F. Cutting "No. 221," 6 Inch, \$5.50. ~~3.67~~

Three-fourths Size. Plate 280 G.



BOWL.



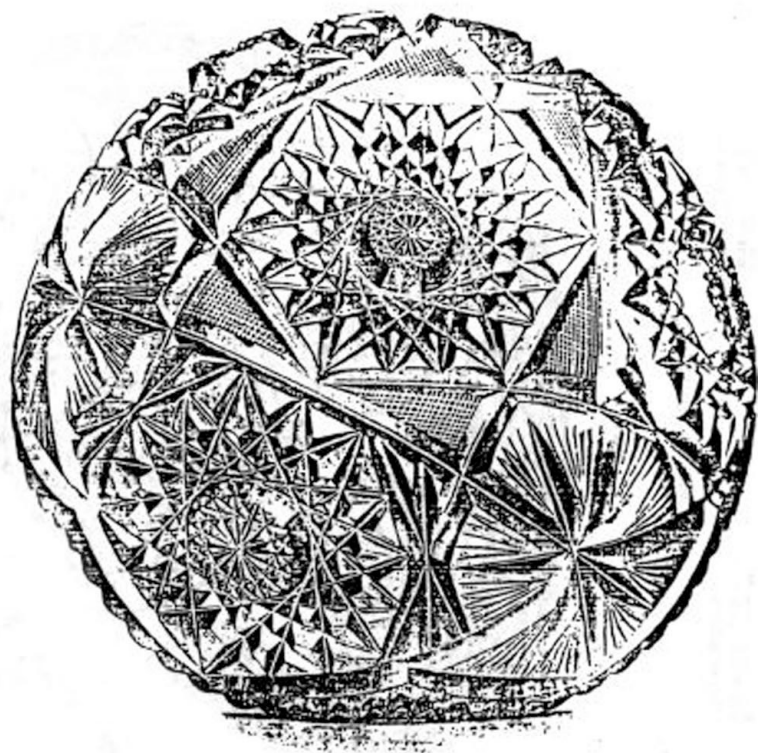
SAPPY.

CUTTING "No. 308"

FRUIT OR SALAD BOWL.
No. 101 F. 8 inch. \$7.50
No. 103 F. 9 " 9.70

ROSEND SAPPY.

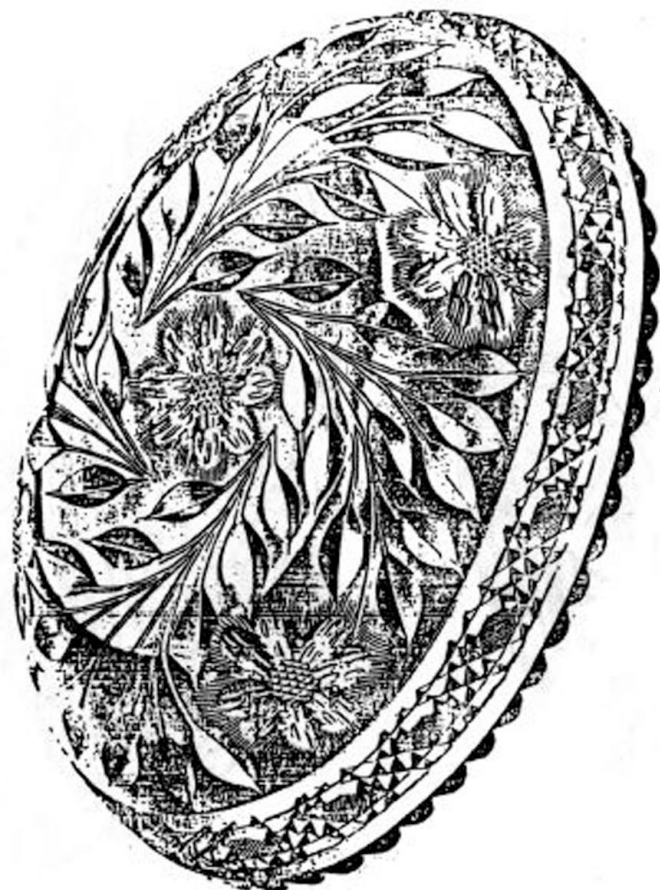
No. 231 F. 9 inch. \$2.50
No. 202 F. 7 " 2.75



ROUND FRUIT OR SALAD BOWLS.

No. 101. "Mayflower," 6 inch. \$5.00 3.36 3.67
 2.102 9 - 7.50 4.40 5.00

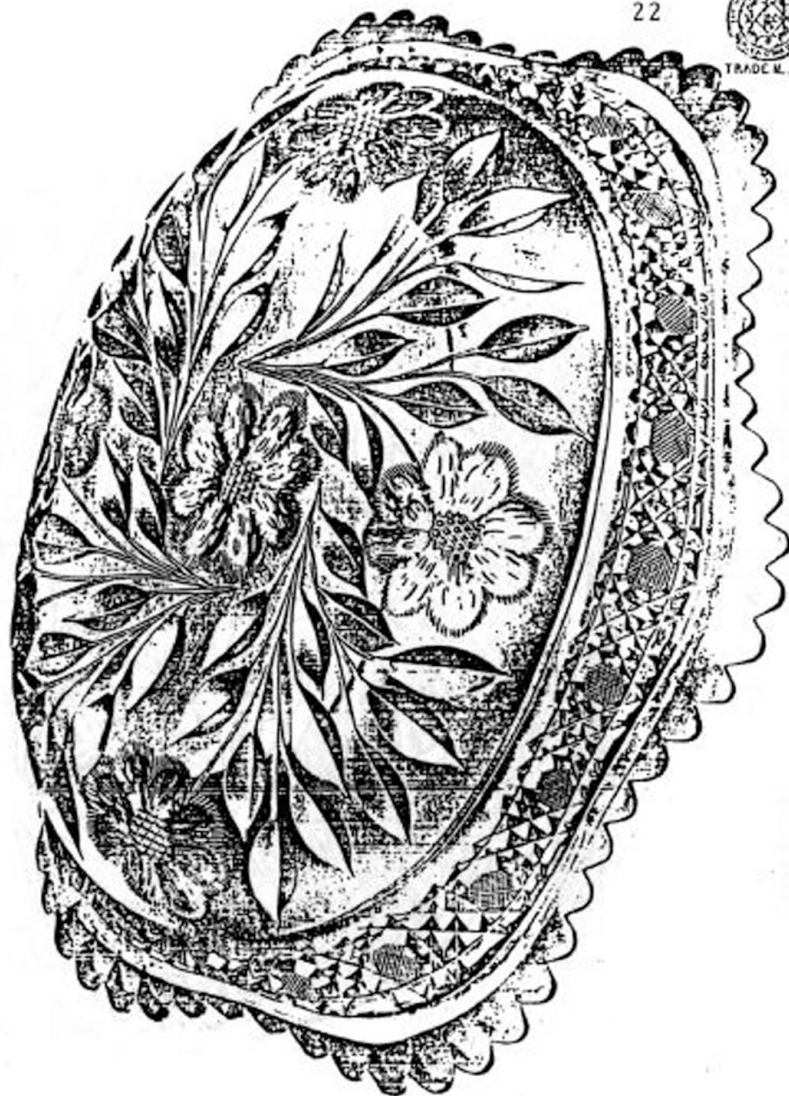
No. 100 F. - Cutting "No. 100," 7 inch. 43.00 2.00
 No. 101 F. " " 8 " 4.50 2.75 3.00



"SOROSIS."

No. 185. Oval Bowl, 10x7 inches, \$9.50 *11: 6.34?*
 No. 186. " 12x8 " 12.50 *11: 8.35.*

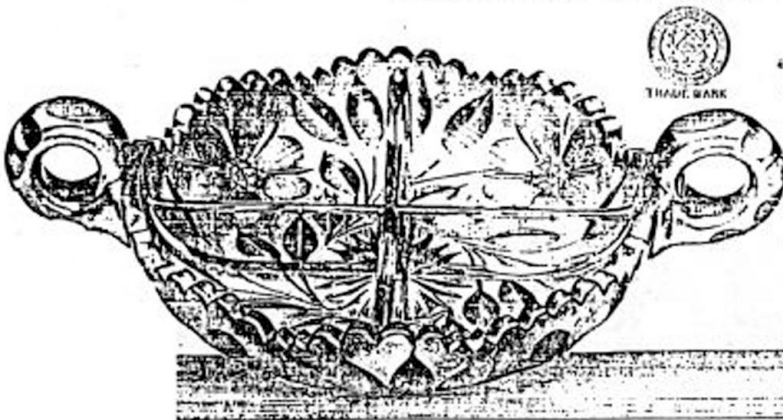
No. 167. Fruit Dish, 11x10 1/2 inches, \$14.50 *11: 9.67?*



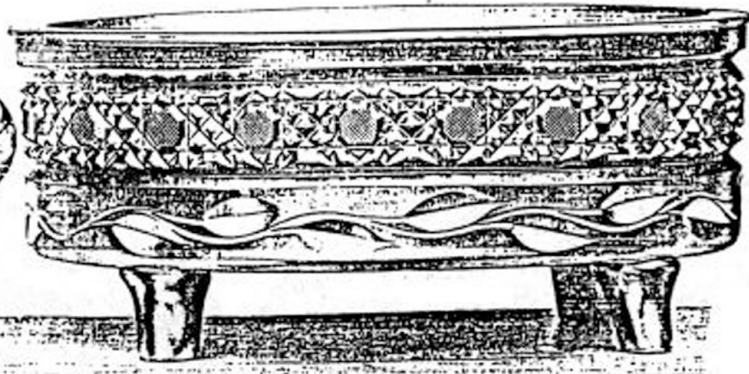
"SOROSIS."

No. 185. Oval Bowl, 10x7 inches, H 40 \leftarrow 6.24?
 No. 186. " 12x8 " 12.50 \leftarrow 8.25.

No. 167. Fruit Dish, 11x10 1/2 inches, H 40 \leftarrow 9.67?



No. 287



No. 988



No. 189



No. 201

"MAYFLOWER"
 No. 287. Relish Dish, 7 inch. 16.75 ~~4.00~~ 4.50
 No. 288. " " 8 " 8.75 ~~5.00~~ 5.50
 Above have partitions making Four Compartments
 No. 189. Relish Dish, 7 1/2 inch. 17.00 ~~4.50~~ 5.00
 No. 190. " " 8 " 19.00 ~~5.00~~ 5.50
 Fitted with Silver Plated Drainers

No. 988. Cutting "No. 281" Oval Fern Dish, 9 1/2 x 6 1/2 inches, 112.00 ~~4.00~~ 4.25
 Fitted with Plated Lining
 No. 200. "Mayflower" Round Napkin, 7 inch. 3.75 ~~2.00~~ 2.25
 No. 201. " " " 8 " 4.00 ~~2.00~~ 2.25
 No. 202. " " " 9 " 6.00 ~~3.00~~ 3.25