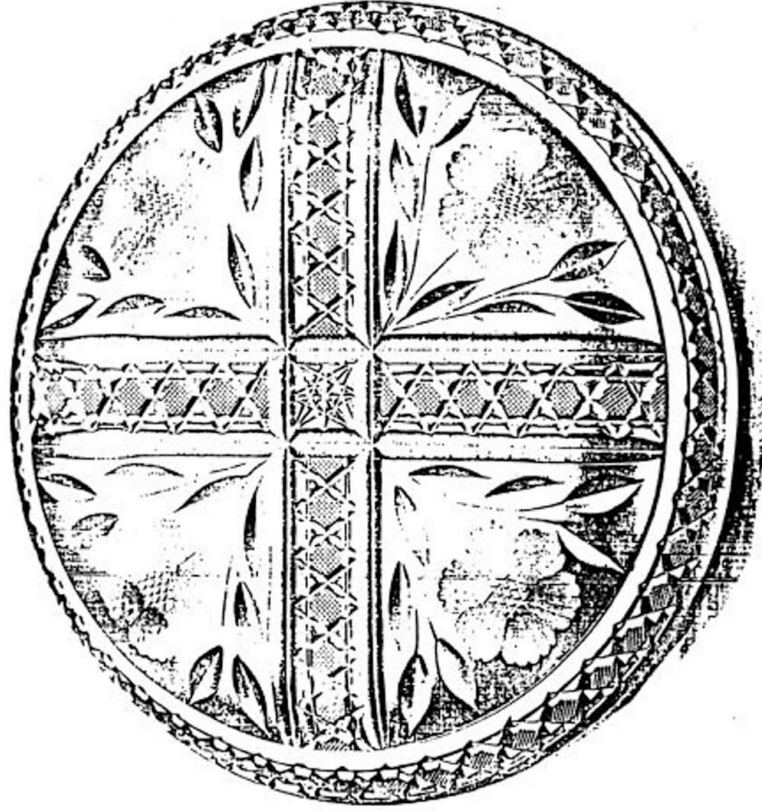


BOWL

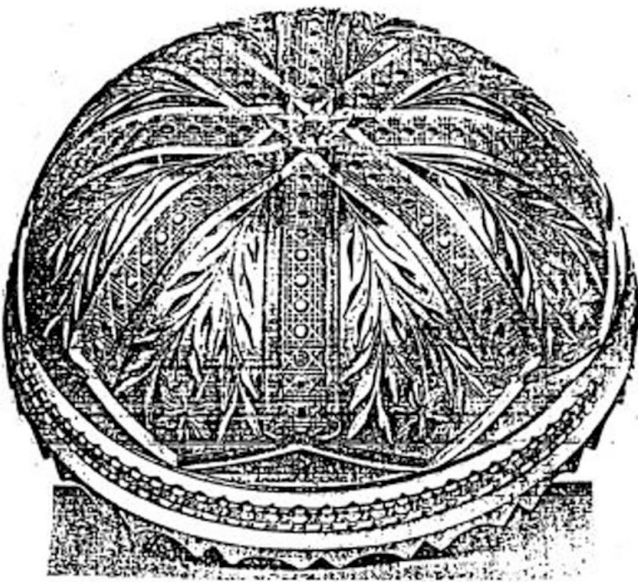


NAPPY.

CUTTING "No. 306"

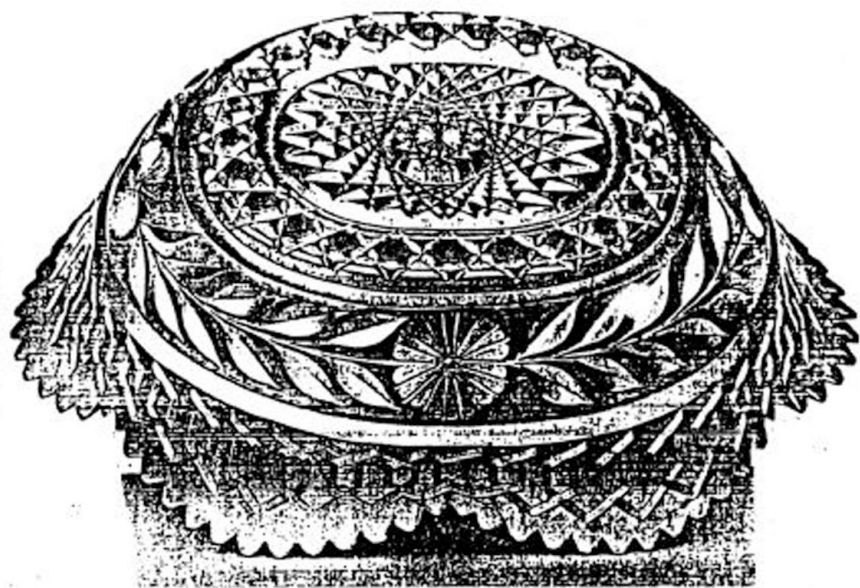
FRUIT OR SALAD BOWL.
No. 191. 8 inch, \$4.50

ROUND NAPPY.
No. 251. 8 inch, \$4.35



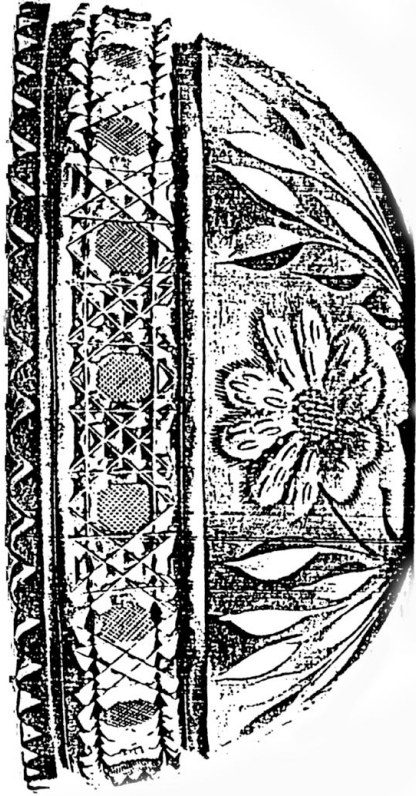
CUTTING "No. 303"

No. 101. Round Fruit or Salad Bowl, 8 inches, \$9.35 *See 57*



"BEVERLY" (Patented).

No. 101. Fruit Dish, 11 x 8 inches, \$9.35 *See 67*



BOWL.



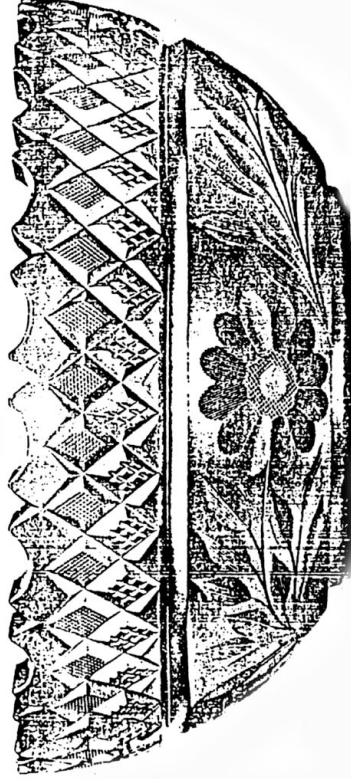
NAPPY.

"SOROSIS."

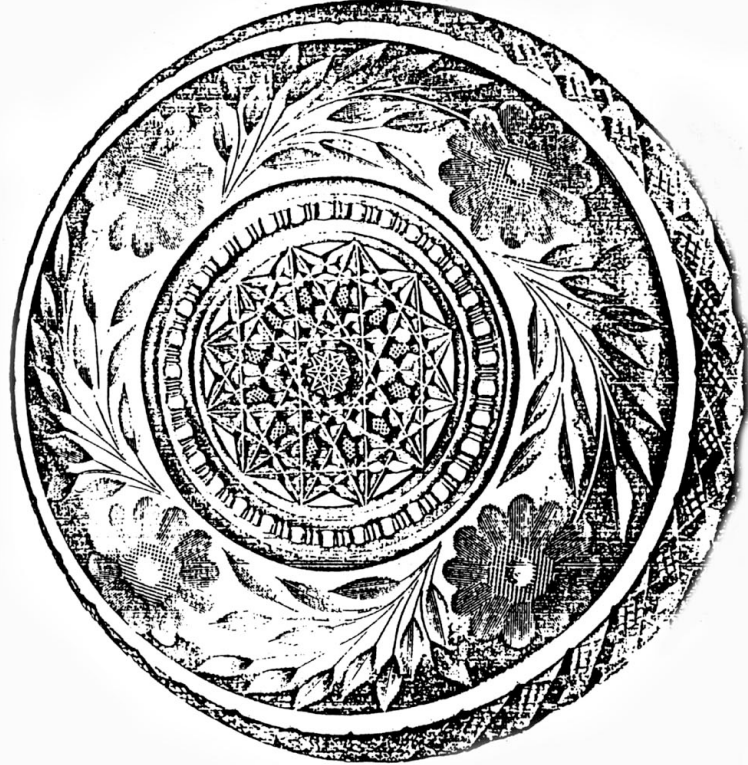
Fruit or Solid Metal.	London.	Hamburg.	4.67
No. 101, 8 inch.	30.00	27.77	6.23
No. 102, 9 "	11.00	10.00	1.00
No. 103, 10 "	14.00	12.67	1.33
No. 104, 11 "	17.00	15.33	1.67

Seven-eighths Size. Plate 361 G.





BOWL.



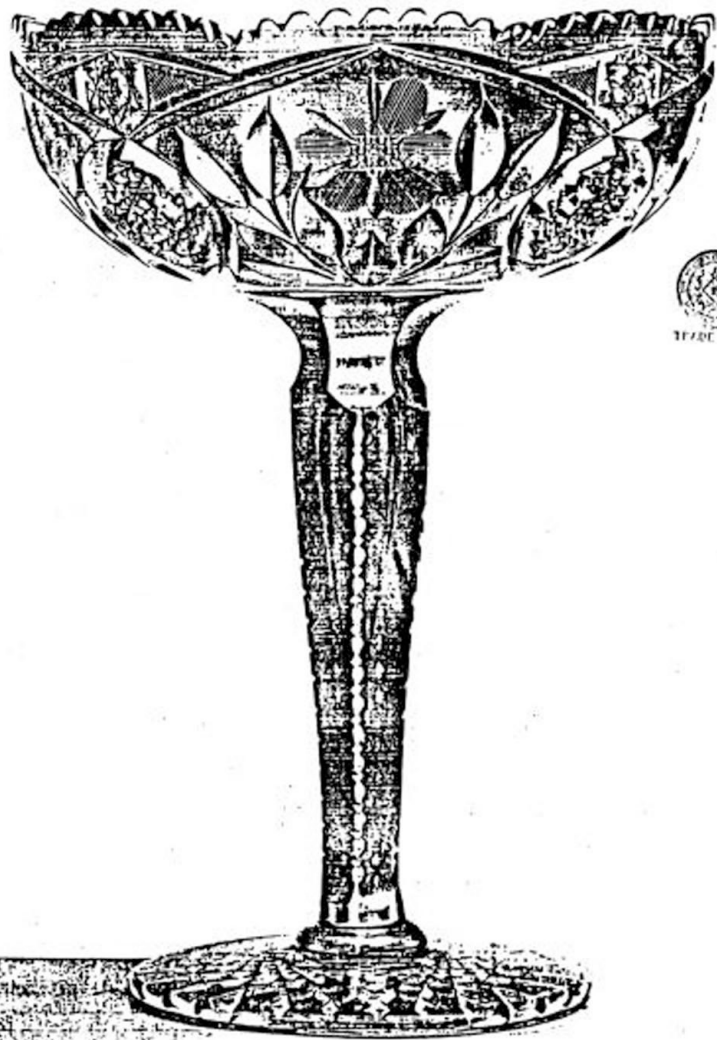
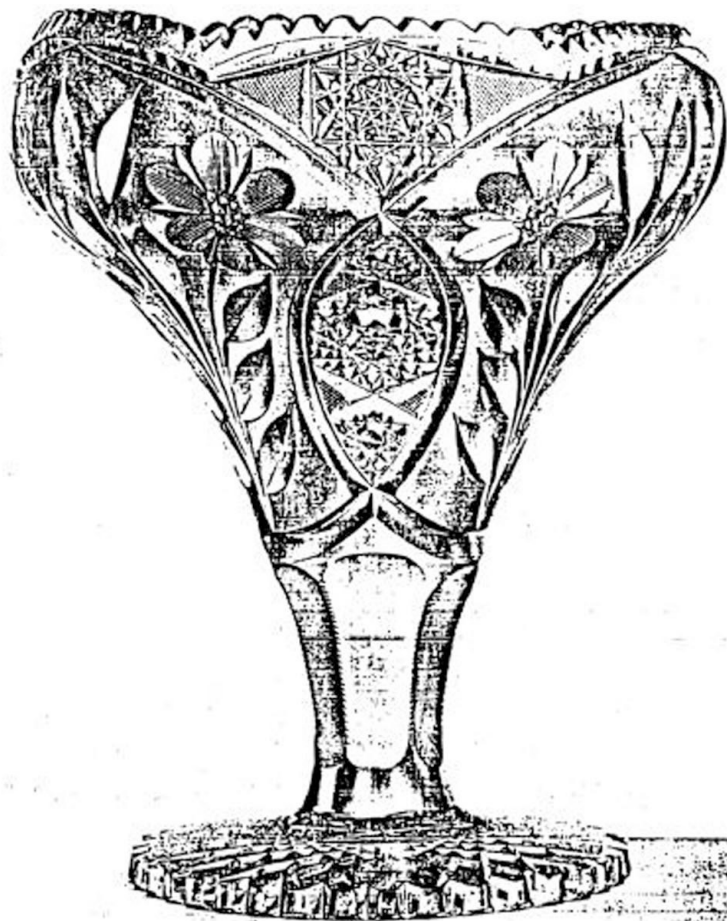
NAPPY.

CUTTING "No. 310"

FRUIT OR SALAD BOWL.

No. 101. 8 inch. \$4 35
No. 102. 9 " " 5.70 - 4/1

ROUND NAPPY.
No. 201. 8 inch. \$8.50
No. 202. 9 " " 7.00 - 2/

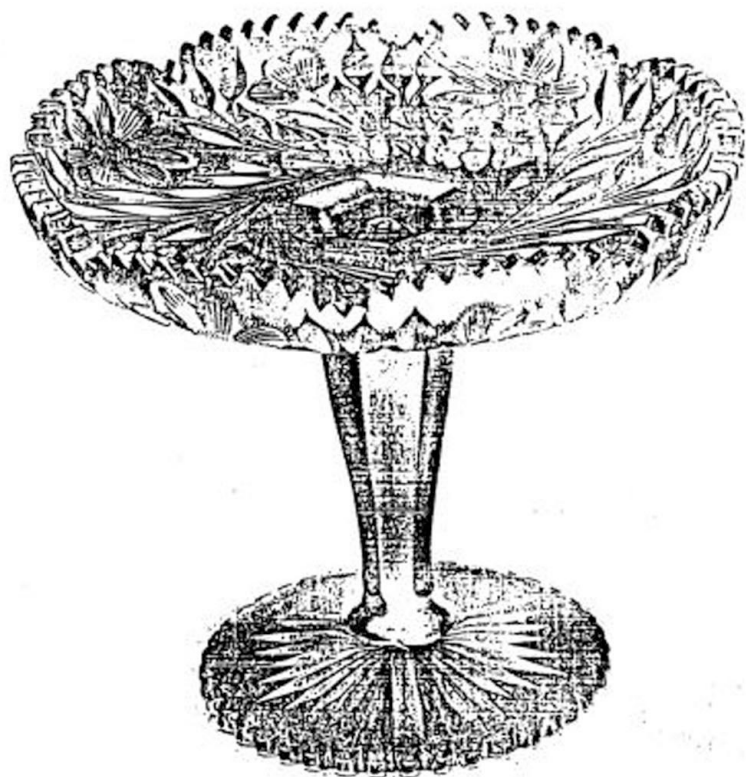


TRADE MARK

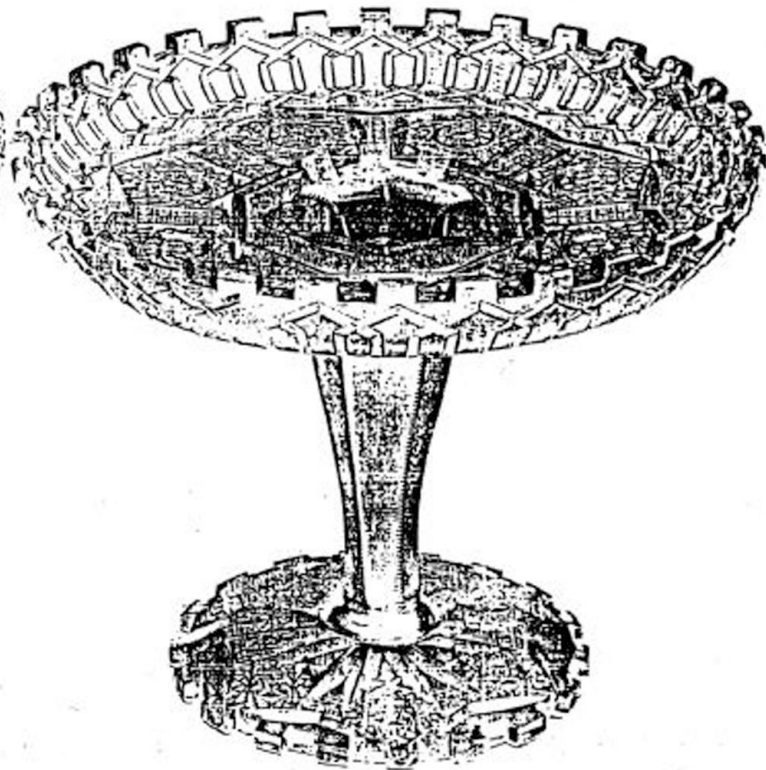
"SHIRLEY" (Patented) COMPORTS.

No. 1257 7 inch, \$11.00 ~~12.00~~ 5.67
 No. 1258 8 " 15.00 ~~16.00~~ 12.24

No. 1259 8 inch Diameter, 11 inch High, \$13.50 ~~14.50~~ 9.00



No. 1102—Thalia, 10 inch, \$16.00



No. 1262 Alhambra, 10 inch, \$21.00 - 2.50 15.50

COMPORTS OR CAKE STANDS.

Two-thirds Size. Plate 358 G.



COMPORTS.

No. 1271. "Mayflower," 7 1/2 inch Diameter, \$5.75 245 3.14
 No. 1272. " " 9 " " 7.00 455 5.00

No. 1270 F. "Shirley," (Patented), 7 inch Diameter, \$6.00 375 4.34

No. 254 F. "Mayflower," 6 inch Diameter, \$3.75 225 2.31



TRADE MARK



CUTTING "No. 3021"

No. 101. Round Fruit or Salad Bowl, 8 inch, \$6.75 ~~5.50~~



CUTTING "No. 302"

No. 191. Fruit Dish, 11 x 8 inches, \$7.50 ~~5.00~~