

Hobstar Preview: March, 2016

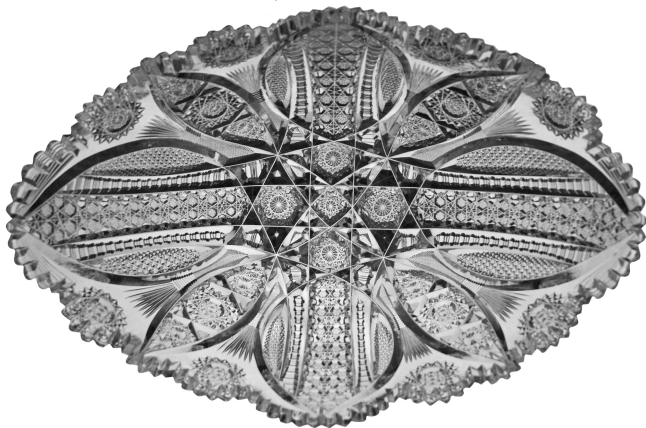


Corset form three handled loving cup green cut to clear in a "rock crystal" design, 7 3/4" tall, 7" rim. Rarities (160) shows a smaller example.

There are eighteen pictures of cut glass in this issue, plus several articles. Here are some of those pictures.



Triangular r Fancy Dish cut in the **Duchess** pattern by Pitkin & Brooks. 3" tall, 10" wide.



Oval punch bowl deeply cut in the **Newport** pattern by J. Hoare. 16 3/4" long, 10 1/4 wide.



Umbrella stand cut in the **Roman** pattern by Kelly and Steinman. 25 1/2" tall, 7" rim, 23 1/2 lbs. Only two of these are believed to survive. See Rarities (251) and compare with *Kelly & Steinman Catalog* reprint (100-02)..



Two views of a pedestal ovoid vase cut in the **Eleanor** pattern by J. Hoare. 3 1/4" long vesica tusks are cut onto each end.

Join the ACGA to receive monthly Hobstar issues. Members also have worldwide access to the wealth of cut glass knowledge in our growing library of online catalogs and online Hobstar archives, which present every issue published since 1978.