

Hobstar Preview: February, 2016



Signed Sinclair punch bowl 16 3/4" diameter, 16 1/2" tall. There are twelve deeply engraved fruit medallions on the bowl, plus eight floral medallions on the base.

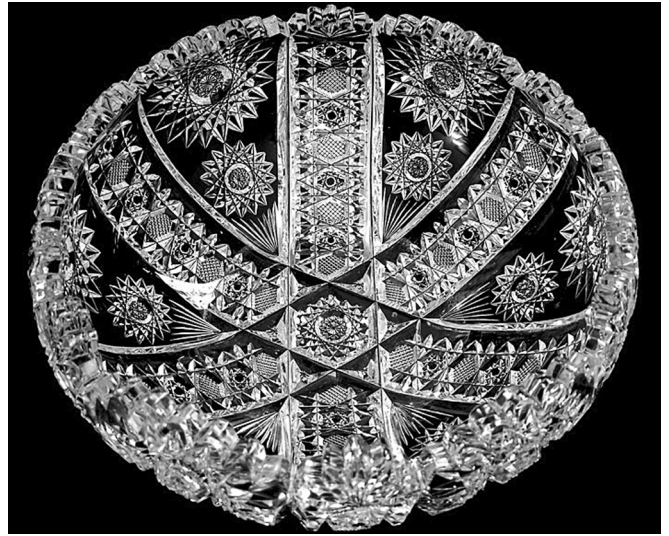
"**Heat Check Revisited**" by Dave Nickerson presents an explanation of why handle attachment points sometimes become sites of glass cracks or detachments. The body distance between handle attachment points is usually much less than the distance traced around the axis of the handle. As ambient temperature changes, the handle and the body will expand or contract different distances, causing stress at the attachment points which may lead to the "heat check" damage sometimes seen.

The "**Brilliant Glass in Corning**" show will be held April 23-24 at the Corning Museum of Glass. Not sponsored by the ACGA, the event will not be vetted.

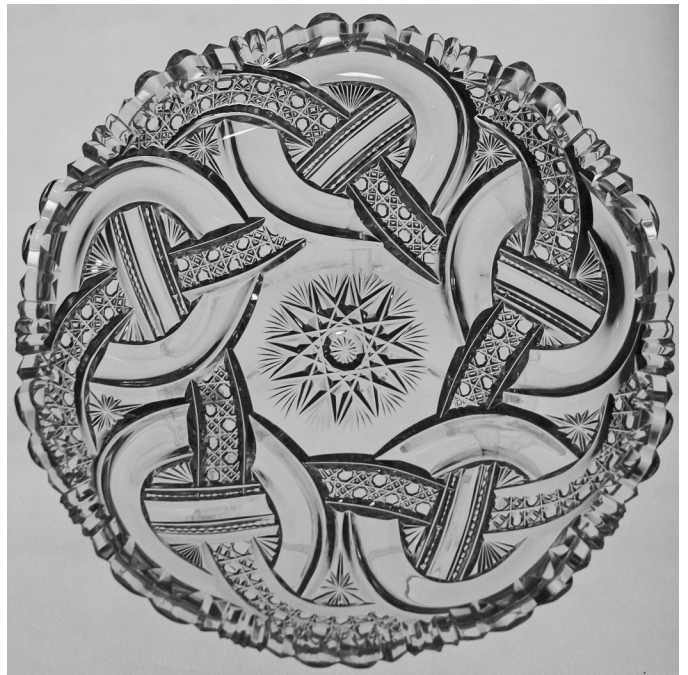
A full page ad showing fifteen cut glass photos announces the Woody Cut Glass Auction to be held March 5th, 2016 in the St. Charles MO Convention Center. 400 lots will be sold without reserve.

"**Tom's Treasure Box**" by Mark Alan Vinson this month presents the Fry **Vanity** and Libbey **Savona**

patterns, two "Bridesmaid" patterns which should receive more emphasis.



Hawkes **Roman** is the pattern quiz answer for November, 2015. The Quizzard describes differences between Roman and the similar Dorflinger **Windsor** pattern.



"**Woody Auction Results, Dec. 5, 2015**" by Fred Coveler reported that this 7" plate in **Crystal City by Hoare** sold for \$6,750. Over 500 7" cut glass plates were sold; some definite bargains were acquired!

Join the ACGA to receive monthly Hobstar issues. Members also have worldwide access to the wealth of cut glass knowledge in our growing library of online catalogs and online Hobstar archives, which present every issue published since 1978.