

Hobstar Preview: September, 2013



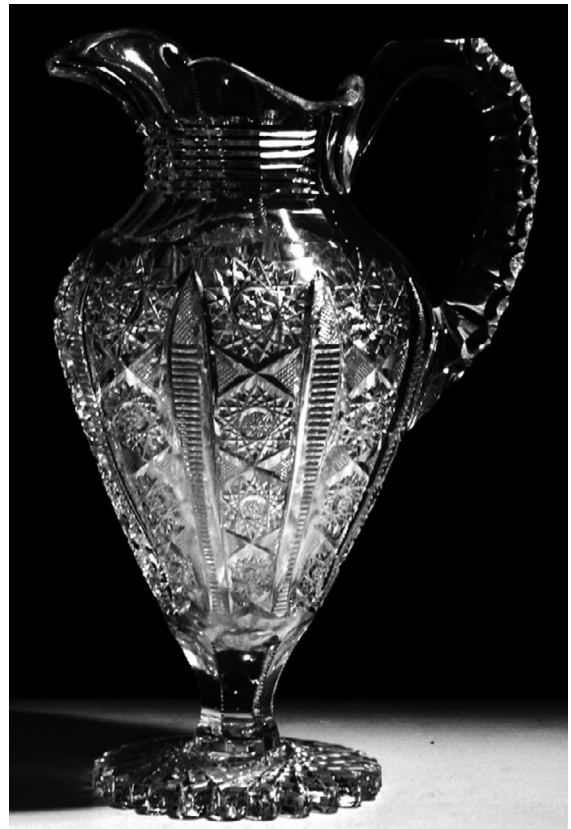
Jug cut by Hawkes in the **Albany** pattern.

"**Pattern Quiz**," by Bill Evans revealed that the mystery tumbler is decorated in Albany pattern by Hawkes, as documented in *The Complete Cut & Engraved Glass of Corning*, ill. 328. The Albany tray has a significant border design which is absent on [the Pattern Quiz] tumbler as well as the round plate identified as Albany in Boggess *Identifying* fig. C451. Perhaps the border was omitted to accommodate the tumbler shape; however, there would have been room to cut the border around the top had the basal flutes been omitted." The border is formed by wonderfully inter-woven serpentine channel cuts surrounding Kohinoor cutting. The question as to whether the Hawkes Albany pattern must contain the serpentine Kohinoor border will have to remain "a question" until we find a catalog reference that shows the Albany motif without the border and possibly a different catalog name. We have been calling pieces with the Albany central motif by that name without the border for at least 24 years.

The Fry and P&B **King George** pattern is similar but has significant differences. In Albany, the deeply cut flat-bottomed channel cuts frame the double-mitered squares. In the Fry and P&B patterns the much smaller channel cuts are inside squares framed by double-miters.

Hawkes **Albany** also has single star centers in the squares whereas the Fry pattern has nothing cut on the diamond or is cross-hatched, and the P&B pattern has flat stars. Franz Hellwig, while hunting for the June quiz pattern, found 4 different center variations of the Fry and P&B King George pattern in their catalogs.

"**The Tiffin Connection, T.G. Hawkes & Company**," by Mary H. Luttrell & Frank O. Swanson summarizes the sequence of firms that purchased and used Hawkes cut glass designs after the factory closed in 1962.



"**Selected Recent Auction Results**," by Fred Coveler reports that this signed Tuthill ewer was sold by Savo Auctioneers of Archbald, PA for a hammer price of \$3,600.

Join the ACGA to receive monthly Hobstar issues. Members also have worldwide access to the wealth of cut glass knowledge in our catalogs and online Hobstar archives, which present every issue published since 1978.