



Dorflinger ruby-to-clear table bell cut in **Strawberry Diamond & Fan**. 5 1/4" tall, 3 1/8" rim diameter, two-part hollow metal clapper.

understood among glass bells. This article tells how to determine whether or not a cut glass bell is genuine, or might have been made from a cut down wine glass.



"**Henry Clay Fry and His Bell**," by Ken Braunstein, describes a 32 pound reproduction of the "Liberty Bell" made by the Fry Glass Co. for the 1905 Lewis and Clark Exposition in Portland, Oregon. The glass bell is 18" tall, 20 1/2" wide and has miter cuts more than 3/4" deep. It is certainly one of the largest examples of a single piece of cut glass from the American brilliant period and the second biggest glass bell ever made. The Corning Museum of Glass recently restored the Fry Liberty Bell and has it on exhibit under a long-term loan agreement.

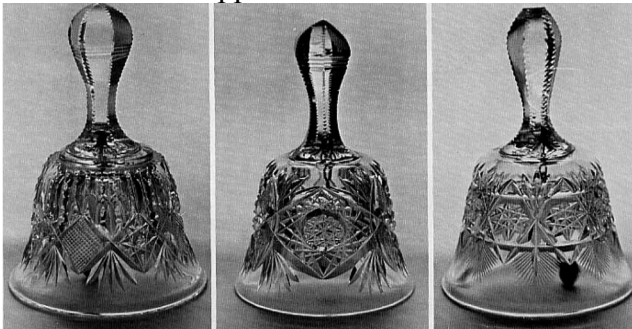
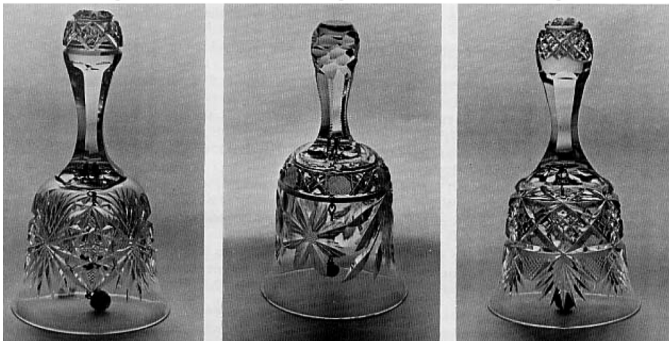


Figure 1

Figure 2

Figure 3

"**Woody Auction Results**," By Fred Coveler reported that the 11/6/10 auction sold for \$11,000 an 8" X 16" one-piece punch bowl signed Hawkes in their **Marquis** pattern with a very elaborate Reed & Barton heavy sterling silver rim in a beautiful **Iris** pattern. A 7" turquoise cut-to-clear plate featuring a cane, zipper and pillar swirl design sold for \$2,750. A set of six 4-5/8" cranberry cut-to-clear wines in **Persian** by Dorflinger (hobstar base) sold for \$2750.



"**Bells**," by Jonni & Vernon Jones. Cut glass bells of the Brilliant Period are the least appreciated or

[Join the ACGA](#) to receive monthly Hobstar issues. Members also have worldwide access to the wealth of cut glass knowledge. The ACGA offers a growing list of old Brilliant Era Cut Glass catalogs in our online Hobstar archives, plus every Hobstar published since 1978.